

Welcome  
to 4-H Swine

# Important

- ❖ Commitment Form
  - Turn in by Weighing and Tagging Day
- ❖ Weighing and Tagging Day
  - @ Fairgrounds
  - Or by leader on or before this date
- ❖ Commitment to Excellence & Drug Withdrawal form due August 1<sup>st</sup>
- ❖ Market Animal and 1 Non Animal Project records checked off by Aug. 1<sup>st</sup>
- ❖ NWMT Fair entries due by Aug. 1<sup>st</sup>
  - 3 Classes (Showmanship, Market, Carcass)
- ❖ Weight range from 220 to 295 pounds

# Expenses

- ❖ Weiner Pig
- ❖ Feed
- ❖ Health Care
  - De-Wormer
- ❖ Materials & Supplies
  - Shelter and bedding
  - Fencing
  - Water Supply
  - Feeder
- ❖ Fair and Show Items
  - \$35 Sale /Ultrasound fee
  - Show supplies
  - Thank You gift

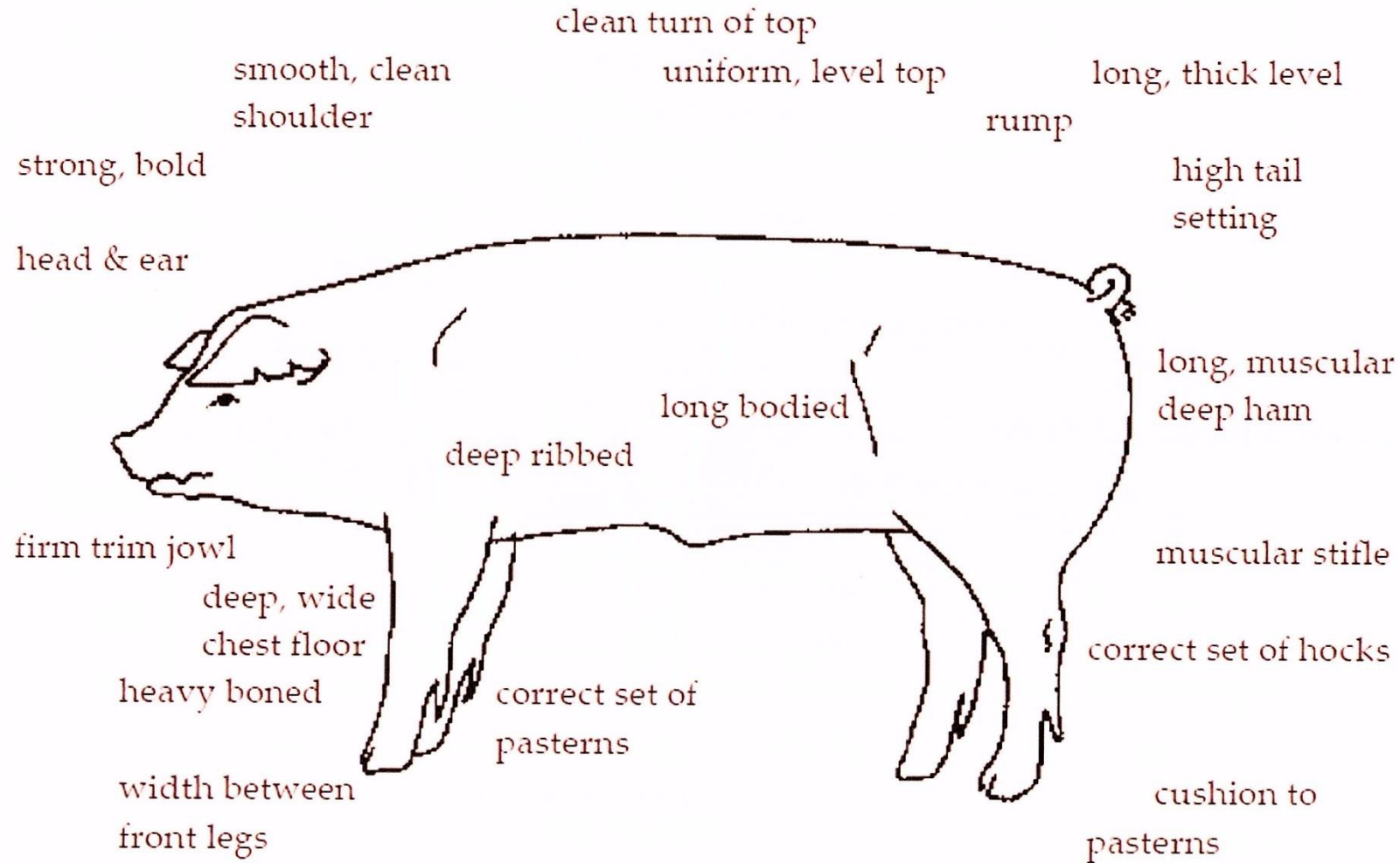
# Shelter

- ❖ Location
- ❖ Dry (Pallets make a dry floor)
- ❖ Bedding
  - Straw is warmer
  - Shavings are cooler
- ❖ Temperature
  - Heat Lamps
    - ✓ 60 degrees or cooler
    - ✓ At least 12" and no more than 18" from top of back when standing
  - Blocks the wind
- ❖ Clean

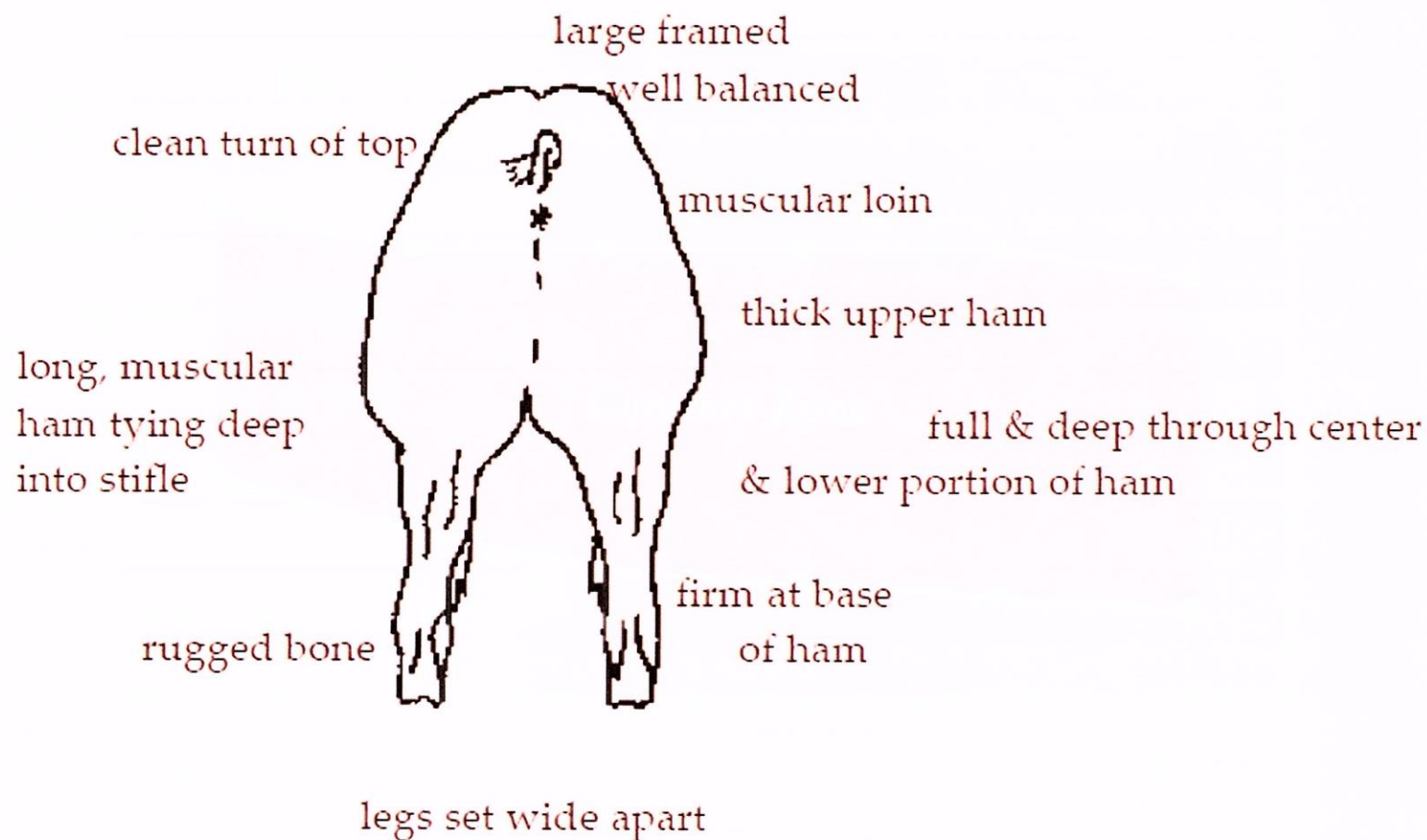
# Pen

- ❖ Secure Fence
  - At least 60 sq. feet (6ftx10ft) per pig
- ❖ Shade (pigs will sunburn!)
  - White or pigs that have white on them WILL sunburn.
- ❖ Feed and Water at opposite ends
  - Promotes exercise
- ❖ Clean
  - Pigs will eat anything and this could harm your pig and cause death
- ❖ Temperature (Pigs don't sweat)
  - Fan, misters, or rinse your hog

# Choosing a pig



# Choosing a pig

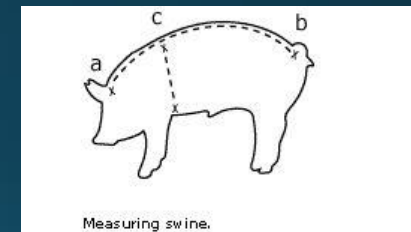


# Health Care

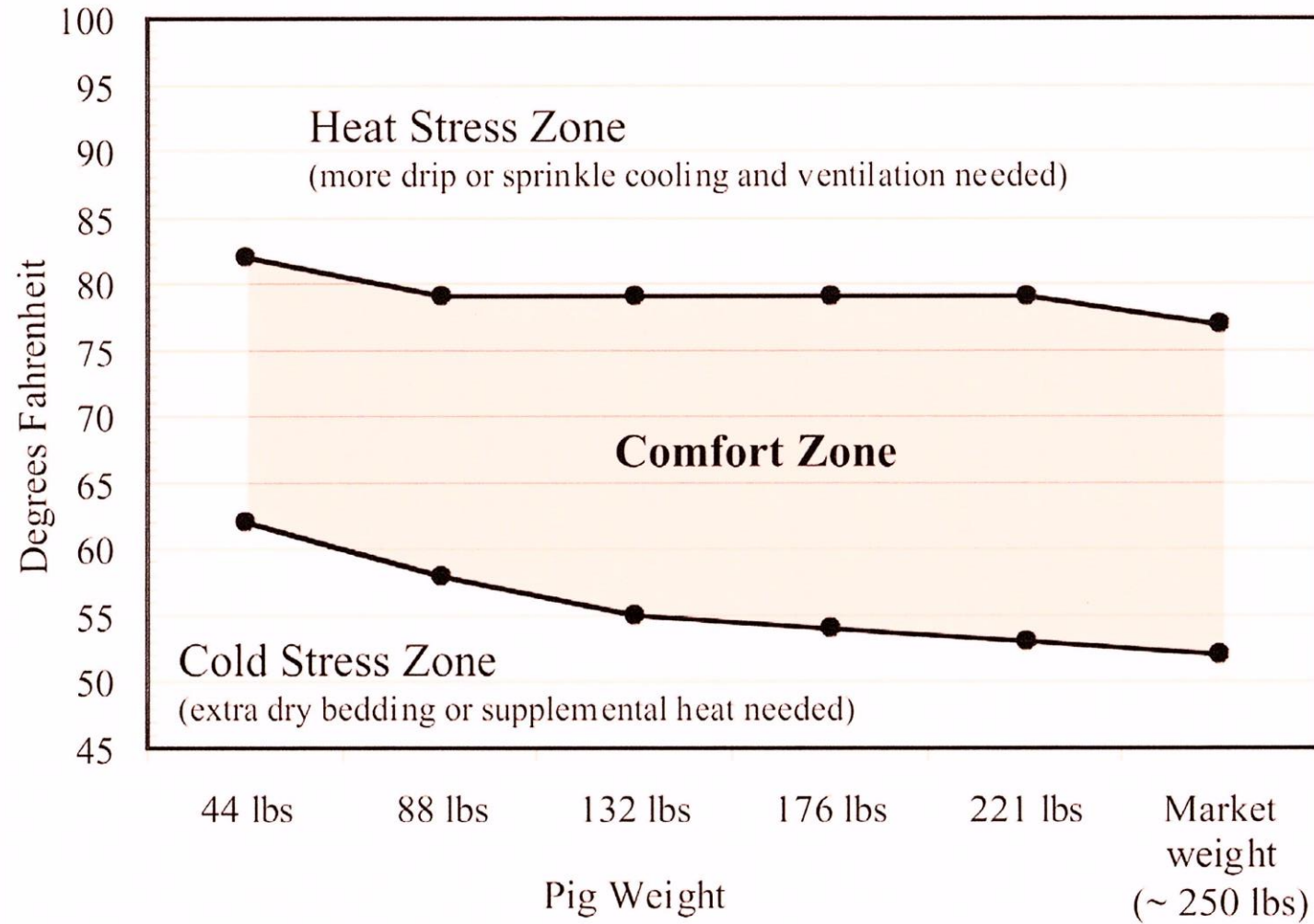
- ❖ Read ALL Labels
  - Withdrawal Time
  - Safe for food animal?
- ❖ Wormer
  - Deworm every 30-45 days
  - Subcutaneous or muscular
- ❖ Record ALL Medications
  - Write in Health Records
- ❖ Check on your pig EVERYDAY
  - Signs of sickness
    - ✓ Pig goes off feed or water
    - ✓ Off by itself, laying down, won't get up
    - ✓ Ears droopy, has scours, physical signs

# Tips

- ❖ Love your pig
  - Less stress for your pig
  - Easier to handle and show
- ❖ Exercise
  - Keeps your pig lean
  - Builds lung capacity for shows and fair (45 minutes a day when reached 200 pounds)
- ❖ Track your pig's growth
  - Scale
  - Tape Measure (Inches)
    - ✓ Heart girth (just behind front legs)
    - ✓ Length (from base of ears to base of tail)
    - ✓ Heart Girth x Heart Girth x Length Divided by 400
  - Average Daily Gain
    - ✓ (Pounds gained divided by days fed)



# Comfort Zone





# NWMT Fair

- ❖ Know your Fair book!
- ❖ You should be able to move and control your hog.
- ❖ You are responsible for your hog
  - Feeding and cleaning pen.
  - Done until Sunday evening.
- ❖ Pigs arrive on Sunday
- ❖ Weigh in is Monday
- ❖ Show day is Wednesday
- ❖ Sale day is Saturday

# Equipment

- ❖ Feed and feed pan or feeder\*
- ❖ Show stick, pipe, or whip\*
- ❖ Muck boots or closed toed shoes\*
- ❖ Soft brush, shampoo or soap\*
- ❖ Wheelbarrow, shovel, broom
- ❖ Spray bottle
- ❖ Wet wipes
- ❖ Poster board\* and decorations

\*These are items you must have.



# Biosecurity

## ❖ What is biosecurity?

- preventative measures taken to reduce the risk of (disease) introduction or transmission

## ❖ Diseases

- PEDV (Porcine Epidemic Diarrhea Virus)
  - ✓ Highly contagious

## ❖ How diseases spread

- Clothing, shoes
- Vehicles and trailers
- People
- Animals
- Equipment

## ❖ Prevention

- Limit exposure to your pig
  - ✓ Keep your pig home
  - ✓ No visitors in pens, stalls or barn
- Clean and Disinfect Equipment
  - ✓ Synergize, Virkon S, Tek Trol, 1 Stroke Environ, and Clorox
  - ✓ Allow to dry completely
- Don't borrow from others
- Quarantine (separate)
  - ✓ New animals or after shows
- Gloves, booties, separate clothes, shoes or boots

# Making the “Right” Choices

## ❖Caring

- Provide daily feed and water, clean facilities
- Help other exhibitors
- Congratulate other exhibitors

## ❖Respect

- Handle and treat animal humanely
- Recognize the animal is dependent on them
- Listens to and follow advice of leaders
- Follow drug use to produce safe, high quality product for consumers

## ❖Fairness

- Fitting and Feeding
- Know and follow rules (4-H and Fair)
- Be considerate of other exhibitors
- Follow ownership and birth date deadlines

## ❖Responsibility

- Train animals to be exhibited safely
- Read, know, and abide by all rules
- Read and follow drug regulations
- Care for animals daily
- Good sportsmanship at ALL times

## ❖Trustworthiness

- Provide daily care of animal
- Follow all food safety rules and withdrawal times and use only approved drugs

## ❖Citizenship

- Help others in need
- Share resources with others
- Follow LQA methods to produce a product safe for consumers

# Most Important!!!

❖ Volunteers are what make this program possible!

❖ HAVE FUN!!!

**WE**   
**VOLUNTEERS**