





## CARBON COUNTY FAIR: JULY 25-29

*\*All times are tentative. Be paying attention and ready to go!!*

### Tuesday

9:00 a.m. Dog Show (Show Barn)  
- Dog Showmanship-Obedience-Agility

10:00 a.m. – 3:00 p.m. 4-H Interviews – be checked in by 2:00 pm (will be on a first come basis)

10:00 a.m. Bicycle Contest

10:00 a.m. Pocket Pet Show then Cat Show (outside Small Animal Barn)

11:00 a.m. – NOON Cloverbud Interviews

5:00 p.m. – 7:00 p.m. Horse Check-Ins

### Wednesday

6:30 – 7:00 a.m. Horse Check-Ins

8:00 a.m. Horse Show (Arena) (Schedule subject to change based on class entries)  
- Horse Showmanship (Senior, Junior, Novice, FFA)  
- Schedule for Level classes will be posted at fair in the horse barn

4:00 p.m. – 7:00 p.m. All livestock must report to fairgrounds. Market animal weigh-ins and vet inspection. All fair exhibits must be on the grounds.  
Weigh-in Schedule: Sheep/Goat 4:00 p.m.  
Swine 4:30 p.m.  
Poultry/Rabbit 6:00 p.m. - 7:00 p.m.  
Beef 7:00 p.m.

### Thursday

8:00 a.m. Sheep Show (Show Barn)  
- Sheep Showmanship (pictures follow showmanship)  
- Market Lamb Show then Breeding Sheep Show

Goat Show (immediately following Sheep Show) (Show Barn)  
- Goat Showmanship (pictures follow sheep pictures)  
- Market Goat Show  
- Breeding Meat Goat Show & Dairy Goat Show

11:00 a.m. Horse Show (Arena)  
- Horseless Horse Levels 1- 5  
- Non-Premium Classes, Trail (All Levels) & Misc. Classes

Llama Show (Arena)  
- Llama Showmanship (pictures follow showmanship)  
- Fiber and Breeding, Packing, Performance, Driving

5:00 p.m. Breeding Swine Show (Show Barn)  
Market Swine Show (pictures follow each class)

## CARBON COUNTY FAIR: JULY 25-29

*\*All times are tentative. Be paying attention and ready to go!!*

### Friday

- 8:00 a.m. Market Swine Ultrasound (location pending) **\*\*\*NEW\*\*\***
- 8:00 a.m. Beef Show (Show Barn)  
- Beef Showmanship (pictures follow showmanship)  
- Market Beef Show then Breeding Beef Show
- Dairy Cattle Show (immediately following Beef Show) (Show Barn)  
- Dairy Cattle Showmanship then Dairy Cattle Show
- 10:00 a.m. Market Sheep & Goat Ultrasound followed by Market Beef Ultrasound  
(outside Show Barn addition)
- 12:00 noon Poultry Show followed by Rabbit Show (Show Barn)
- 5:00 p.m. Swine Showmanship (Show Barn)
- 9:00 p.m. Dance hosted by 4-H Council (Home Ec building)

### Saturday

- 8:00 a.m. Small Animal Sweepstakes (Show Barn) **\*\*\*Note time change\*\*\***  
(Dog, Rabbit, Poultry, Cat and Pocket Pets)
- 9:00 a.m. Large Animal Sweepstakes (Arena)  
(Beef, Dairy, Sheep, Swine, Horse, Goat and Llama)
- 11:00 a.m. Buyers Lunch
- 11:45 a.m. Cloverbud Showcase
- 12:45 p.m. Flag Presentations
- 1:00 p.m. Livestock Sale
- 5:00 p.m. Release all exhibits. **NO early checkouts without approval of superintendent.**

# TABLE OF CONTENTS

## **FAIR RULES**

Fair Entry Form. . . . .	1
Fair Schedule. . . . .	3
Fair Rules & Regulations . . . . .	6
Judges Rules & Regulations . . . . .	7
4-H Rules & Regulations . . . . .	7
Dress Code . . . . .	8
FFA Rules & Regulations . . . . .	8
Showmanship . . . . .	9
Livestock Division – Rules & Regulations . . . . .	10
Superintendents – Rules & Regulations . . . . .	11
Superintendents . . . . .	11
Flow Chart . . . . .	12

## **4-H & FFA ANIMAL SCIENCES**

### **DEPARTMENT A**

Class 1 – Beef . . . . .	13
Class 2 – Dairy . . . . .	14
Class 3 - Goats . . . . .	14
Class 4 - Horse. . . . .	16
Class 5 – Poultry . . . . .	19
Class 6 – Rabbits. . . . .	20
Class 7 - Sheep. . . . .	21
Class 8 - Swine. . . . .	23
Class 9 - Cats. . . . .	24
Class 10 - Dogs. . . . .	24
Class 11 – Pocket Pets. . . . .	26
Class 12 – Veterinary Science. . . . .	27

### **PLANT SCIENCES – DEPARTMENT B**

Class 13 – Field Crops Sciences . . . . .	28
Class 14 – Weed Science . . . . .	29
Class 15 – Horticulture/Vegetable Gardens . . . . .	30

## **MECHANICAL SCIENCES**

### **DEPARTMENT C**

Class 16 – Aerospace . . . . .	32
Class 17 – Bicycle . . . . .	33
Class 18 – Electricity. . . . .	33
Class 19 – Small Engines . . . . .	34
Class 20 – Woodworking . . . . .	35
Class 21 – Robotics. . . . .	37

## **NATURAL SCIENCES**

### **DEPARTMENT D**

Class 22 – Forestry . . . . .	37
Class 23 – Entomology . . . . .	38
Class 24 – Shooting Sports . . . . .	39
Class 25 – Wildlife . . . . .	40

Class 26 – Range . . . . .	41
Class 27 – Sport Fishing . . . . .	42
Class 28 – Outdoor Adventures . . . . .	43
Class 29 – Wind Energy . . . . .	44

## **COMMUNICATION ARTS & LEISURE**

### **SCIENCES – DEPARTMENT E**

Class 30 – Photography . . . . .	44
Class 31 – Leathercraft . . . . .	46
Class 32 – Exploring 4-H . . . . .	49
Class 33 – Self Determined . . . . .	49
Class 34 – Cowboy Poetry . . . . .	49

## **VOLUNTEERISM & LEADERSHIP**

### **DEPARTMENT F**

Class 35 – Centennial Project. . . . .	50
Class 36 – Citizenship and Service Learning. . . . .	50

## **HEALTH & HUMAN DEVELOPMENT**

### **DEPARTMENT G**

Class 37 – Child Development . . . . .	50
Class 38 – Sewing & Textiles . . . . .	51
Class 40 – Foods & Nutrition . . . . .	55
Class 41 – Cake Decorating . . . . .	57
Class 42 – Home Environment . . . . .	57
Class 43 – Family Life . . . . .	59
Class 44 – Babysitting . . . . .	59
Class 45 – Theatre Arts. . . . .	59

## **COUNTY PROJECTS**

### **DEPARTMENT H**

Class 50 – Arts & Crafts, Scrapbooking . . . . .	59
Class 51 – Farm Safety. . . . .	61
Class 52 – Welding. . . . .	61
Class 55 -- Llama. . . . .	62

### **FFA – DEPARTMENT 1**

Class 60 – FFA Farm Shop Work . . . . .	63
Class 61 – FFA Range Management . . . . .	63
Class 62 – FFA Crops . . . . .	63
Class 63 – FFA Weed Science . . . . .	64
Class 64 – FFA Farm Safety. . . . .	65
Class 65 --FFA Horticulture. . . . .	65

## **CLOVERBUDS– DEPARTMENT J**

Class 70 – Cloverbuds. . . . .	65
--------------------------------	----

## **PREMIUMS**

Premium Points . . . . .	66
--------------------------	----

# **Fair Rules and Regulations**

## **For All Exhibitors, Parents and Fair Board**

**Entries are open to all Carbon County 4-H and FFA members who are currently enrolled in Carbon County Extension and Vocational Education programs.**

1. 4-H and FFA entry blanks may be mailed to the Carbon County Extension Office, P.O. Box 230, Joliet MT 59041 or brought to the Extension Office at 202 State Street, Joliet. **Entries must arrive at the Extension Office no later than 5:00 p.m. on June 23, 2017.**
2. All 4-H and FFA members must participate in at least one of the Fair Clean-Up Days. If you do not participate in clean up days, you will not be allowed to exhibit or sell at the Carbon County Fair. Excused absences will be allowed, but the county agent must be notified in writing with the reason you will not be there and must approve your absence **before** clean up day. Excused absentees will be assigned additional cleaning/serving duties during fair to make up for their absence.
3. Absolutely no mistreatment of animals will be tolerated.
4. 4-H and FFA members must accompany, care for and exhibit their own livestock at the Carbon County Fair. In the event that an exhibitor needs help, they may have another Carbon County 4-H or FFA member assist them.
5. The Fair Board reserves the right to detract from these rules as they deem necessary and reserves the right to arbitrate any misunderstandings.
6. The Fair Board shall have the power of decision in all matters of disagreement between exhibitors, superintendents or other officials of the fair.
7. The Fair Board and those connected with the fair will not be responsible for any personal injury while at, going to or coming from the fair; nor will they be responsible for the loss or injury or damage to articles or stock on the grounds for exhibit.
8. All 4-H and FFA members staying at the fair grounds at night **MUST** have a designated chaperone and be signed up in the Home Ec. building. 9:00 p.m. is the deadline for feeding animals etc. 10:00 p.m. is lights out.
9. All exhibits must be the work of the exhibitor. Any exhibitor violating this rule will forfeit all premium awards.
10. All agriculture crops and garden exhibits must be grown in the current enrollment year.
11. Home Economics exhibit area will be **CLOSED** to all persons other than the judges and officials during the judging.
12. Any exhibitor and/or parent who publicly expresses disapproval of the judges decision, by speech, act or interference, shall be guilty of conduct unbecoming an exhibitor. Exhibitor/parents will forfeit all premiums and be excluded from further competition.
13. The Fair Board reserves the right to remove from the fair grounds any exhibit that is deemed unsuitable or objectionable. Exhibitors will be asked to remove any project that is not cared for properly.
14. The decision of the judges will be final. In order for an appeal to be considered, it must be in writing and filed with the Fair Board.
15. Should any doubt arise as to irregularity of any entry, the superintendent in charge of the department must be notified at once. The superintendent and judge of the department shall decide the matter and the decision will be final. **NO new entries will be accepted at fair time!**
16. Rules that apply specifically to a class are listed under the heading of that specific class.
17. No premium shall be awarded on an animal or article not listed in this Fair Premium Book.
18. Indoor exhibits must be left until the conclusion of the livestock sale. All exhibitors are responsible for their own exhibits. Any exhibits left after 5:00 PM the last day of the fair will be disposed of.
19. All funds raised at the concession stand will go to the 4-H Council to be used at the discretion of the 4-H Council.

20. **Pets or Companion Animals that are not being exhibited must be under the control of the owner by chain or leash. Pets or Companion Animals that are not being exhibited WILL NOT be allowed into any of the animal barns or outdoor arenas, and must be kept away from exhibited animals while on the fair grounds. Pets will be subject to Red Lodge City Code. Example: Dogs Chapter 5 Animal control Article B.**
21. Only camper trailers and tents are allowed along the creek. No other vehicles may be parked near the creek. Fair superintendents will have posted reserved camping spots. Campers, tents, etc. will not be allowed on the grounds until **9:00 am Tuesday** the week of the fair.
22. Exhibitors of indoor non-perishable exhibits will have the option of selling their exhibits at the silent auction. Only blue ribbon entries may be sold; each exhibitor is limited to selling 2 silent auction items.
23. All market animals must be tagged by the specified deadlines and have those ear tags in place at the weigh in. If your animal loses their tag, please contact the Extension Office or your FFA advisor.
24. Any animal that is sold and donated to some entity will be re-sold while still in the ring. They can be re-sold only if they are donated to an FFA chapter, the 4-H Council or an approved non-profit.
25. Self-Determined & Independent Study projects are required to have project plans on file at the Extension Office.
26. Hog wash racks will be closed Wednesday evening of the fair.
27. 4-H and FFA exhibitors will receive a complimentary ticket for the buyers' lunch. Exhibitors need to pick up meal tickets at the fair office on Saturday of the fair.
28. Fundraisers outside of 4-H/FFA activities are not allowed on the fairgrounds.
29. Alcoholic beverages will be subject to all laws and regulations of Red Lodge City Code.

### **Judges Rules and Regulations**

1. The judges' book is final and conclusive in connection with awards and premiums.
2. Decisions made by the judges are final. In order for an appeal to be considered, it must be in writing and filed with the Fair Board.
3. The clerk must make a proper record of each winner in the judge's book.
4. Judges will award each exhibit a blue, red or white ribbon. Judges are not required to award a prize to an unworthy exhibit.

### **4-H Rules and Regulations**

1. Standard poster size for indoor entries is 14 x 22 or dimensions as stated in dept./lot descriptions.
2. All 4-H exhibitors may compete for only one prize in any one lot.
3. All 4-H ribbons will be left fastened to Home Economics and Agriculture exhibits until the end of the fair.
4. Members must be entered in the bicycle project to compete in the bicycle riding and safety course.
5. Exhibitors are required to be enrolled in all projects in which they exhibit.
6. Blue, red and white ribbons will be awarded in each class and premium money issued on the Danish system unless disqualified.
7. Date for computing the 4-H age of an exhibitor is October 1 of the current 4-H year. The 4-H year is from October 1 to September 30.
8. ***Take Note:*** *The Carbon County 4-H Council, in cooperation with the Carbon County Fair Board, has implemented a rule requiring that a complete 4-H record book must be turned into the Extension Office by the September due date before any premium monies will be paid out to exhibitors.*

### **4-H Exhibitor Dress Code for Carbon County Fair**

In order to make the clothing guidelines equitable for all exhibitors, the following guidelines have been adopted by the Carbon County 4-H Council. Failure to follow the dress code forfeits the exhibitor's right to any prizes or premium money. \*Appropriate clothing is required at all times during fair week.\*

**\*\*All official dress is the shirt buttoned to the top – no colored tank tops or other undershirts showing.**

**Indoor Projects:** Black pants or black knee-length or longer skirt; solid white, long sleeved blouse or shirt; leather shoes or boots. No sandals, tennis shoes, hats or vests. Black ties are optional.

**Beef:** Black pants; solid white, long sleeved blouse or shirt; leather shoes or boots. No sandals, tennis shoes, hats or vests. Black ties and western hats are optional.

**Dairy and Goats:** Black pants; solid white, long sleeve blouse or shirt; leather shoes or boots. No sandals, tennis shoes, vests or hats.

**Sheep and Swine:** Black pants; solid white, long sleeve blouse or shirt; leather shoes or boots. No sandals, tennis shoes, vests, or hats. Black ties are optional.

**Horse:**

Slick-soled western riding boots (Phat baby style boots are not allowed) and western hat are required in all Western classes (helmets are acceptable). Spurs are optional in all classes except bareback and halter classes where they are prohibited.

**Western:** Solid white, long sleeve blouse or shirt; black tie; dark blue or black pants; western hat; cowboy boots. Chaps are not allowed, except for Ranch classes where they are optional.

**English:** Solid white, long sleeve blouse or shirt, appropriate with English attire must be worn.

**Hunt type:** Hunt coats (red, scarlet or pink coats prohibited unless exhibitor has earned them as a member of a recognized hunt) breeches; hunt boots; hard hat; stock, chokes or ties are required; gloves optional. Hair that is shoulder length or longer must be contained in a net or braid.

**Saddle type:** Saddle seat; Jodhpur boots; derby; gloves optional. Hair that is shoulder length or longer must be worn in a net or braid.

**Note: English jackets and/or vests may not be worn in halter, showmanship or bareback classes**

**Small Animals:** Black pants; solid white, long sleeved shirt or blouse; leather shoes or boots. No hats, vests, sandals, or tennis shoes. Black ties are optional.

**Livestock Sale: Official dress is required for the sale.**

**Sweepstakes Showmanship: Official dress is required.**

**FFA Rules and Regulations for Exhibiting**

1. Blue, red and white ribbons will be awarded in each class and premium money issued on the Danish System unless disqualified. FFA members are not eligible to receive 4-H project trophies/awards.
2. All FFA exhibitors may compete for only one prize in any one lot.
3. FFA members are required to wear their official dress.
4. **Livestock Sale: Official dress is required for the sale.**
5. **Sweepstakes Showmanship: Official dress is required.**



## SHOWMANSHIP

### 4-H Showmanship Contest

The showmanship contests will include Beef, Dairy, Swine, Sheep, Horse, Goats, Llama, Cats, Dogs, Poultry, Rabbits and Pocket Pets.

Novice class – 8-10 years of age by Oct. 1<sup>st</sup> of the current 4-H year

Junior class – 11-13 years of age by Oct. 1<sup>st</sup> of the current 4-H year

Senior class – 14 years of age and older by Oct. 1<sup>st</sup> of the current 4-H year

1. The judge will choose a 1<sup>st</sup>, 2<sup>nd</sup>, 3<sup>rd</sup>, 4<sup>th</sup>, and 5<sup>th</sup> place showman winner. The 1<sup>st</sup> and 2<sup>nd</sup> place showman will enter into a Junior Sweepstakes contest and the judge will choose a 1<sup>st</sup>, 2<sup>nd</sup>, 3<sup>rd</sup>, 4<sup>th</sup>, and 5<sup>th</sup> place winners.
2. There is no restriction as to the number of times an individual may be a winner. Junior winners may compete in Beef, Dairy, Swine, Goat, Sheep, and Horse the following year as long as they are in the junior age group. They do not move up to senior division just because they have won.
3. Every boy and girl exhibiting livestock is **required** to take part in this contest unless excused by the Division Superintendent. Participation in showmanship is required in order to sell a market animal at the fair livestock sale. Exceptions may be made by Division Superintendents and will be handled on an individual basis.
4. Evidence of superior fitting, handling or management of animals will be the basis of awards.
5. Trophies will be given to 1<sup>st</sup> place winners in Beef, Dairy, Swine, Goat, Sheep, Dog, Cat, Pocket Pet, and Horse Showmanship. Rosettes will be presented to 2<sup>nd</sup> place winners.
6. All horses will be under halter for all Showmanship contests.
7. There will be no sweepstakes contest for the Novice class. Trophies and ribbons will be awarded for 1st through 5<sup>th</sup> places.
8. Winners or those that will go into Sweepstakes on Saturday will be notified by Friday at 5 p.m.
9. Sweepstakes qualifiers are required to participate.
10. Black pants and white, long-sleeved shirts are required for showmanship.

### FFA Showmanship Contest

1. In Beef, Dairy, Swine, Sheep, Goat and Horse, the judge will choose a 1<sup>st</sup>, 2<sup>nd</sup>, 3<sup>rd</sup>, 4<sup>th</sup>, and 5<sup>th</sup> place showmanship winner.
2. Every boy and girl exhibiting livestock is required to take part in this contest unless excused by the Division Superintendent. Participation in showmanship is required in order to sell a market animal at the fair livestock sale. Exceptions may be made by Division Superintendents and will be handled on an individual basis.
3. Evidence of superior fitting, handling, or management of animals will be the basis of awards.
4. All horses will be under halter for all showmanship contests.
5. All members must wear the official FFA dress.

## Livestock Division – Rules and Regulations

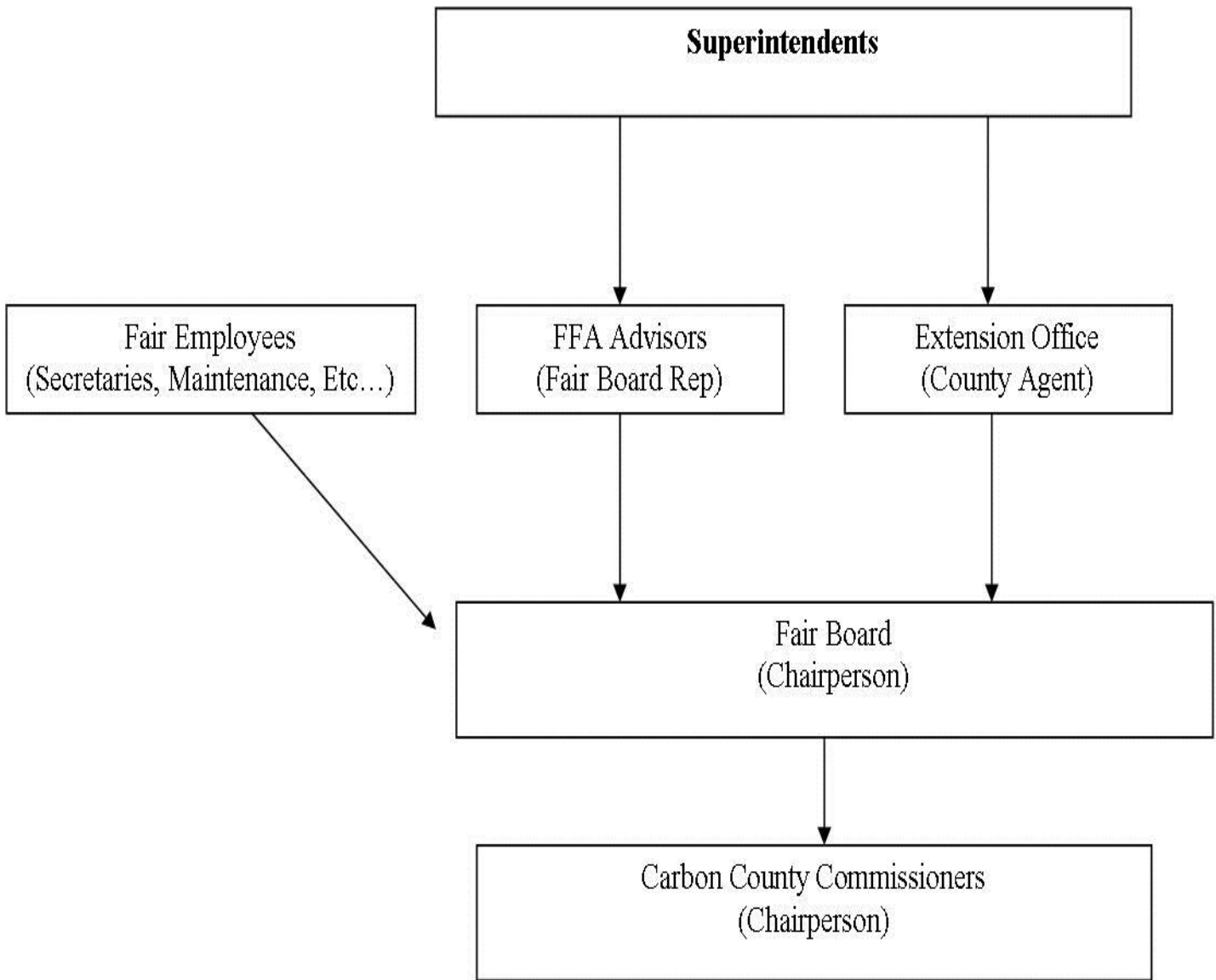
1. *No livestock pens are allowed to be cleaned in the show barn until the livestock sale has ended on Saturday. This is to minimize noise and congestion for our audience during the auction.*
2. All market livestock entered at the fair will be required to display a poster with animal information on it. This includes weight, average daily gain, days fed and cost of gain. The Fair Board will furnish posters. The poster is part of the project. Division superintendents will be responsible for seeing that the posters are exhibited and filled out properly.
3. All exhibited animals to be sold at the fair sale will be declared within one hour of the end of the show for that species.
4. Each exhibitor is allowed to sell 2 animals in the market sale with a limit of 1 animal per species unless the exhibitor is both a 4-H & an FFA member. In that case, the exhibitor may sell one animal of a species in 4-H and another of the same species in FFA.
5. All animals committed for sale and listed on the sale bill will be sold. All Grand Champion and Reserve Champion Market Beef, Market Sheep and Market Swine animals must be sold at the Market Livestock Auction.
6. Any market livestock meeting requirements may be sold at the sale. The cost of transportation for members selling livestock will be \$10.00 per animal sold. **Only animals sold at the sale will be transported.**
7. Livestock exhibitors will be responsible for the appearance, condition and cleanliness of the area assigned to their exhibit. All exhibitors of livestock must supply their own feed and tools to clean stalls. Sawdust will be used as bedding and will be furnished. Only hogs will be allowed the use of straw. All 4-H and FFA livestock will be housed in their designated building with assigned stalls.
8. Upon entering the fair, livestock will be inspected by the Department Superintendent and a veterinarian. If it is determined the livestock is sick or unmanageable, they will be sent home.
9. **Only 4-H and FFA members shall clean stalls or pens, feed, fit or show an animal.** If anyone else is found doing the work, the animal will be disqualified from the show.
10. **Only** judges and officials will be allowed within 10 feet of any animal during judging.
11. All exhibitors will clean the area used for their exhibits and assigned club or chapter area after exhibiting. You must check out with the Division Superintendent before leaving the grounds or all premiums and awards will be forfeited. Exhibitors will not be allowed to clean their swine pen until **2 hours** following the end of the livestock sale. This is to allow for loading and shipping of the livestock.
12. All cattle and horses must be halter broke before fair time and haltered at the fair.
13. All extra bedding and hay must be stored at least 50 feet from any buildings in designated areas only. No manure, bedding, straw or sawdust will be placed in garbage cans or near buildings. **Dispose of in designated area only!**
14. Animals must be tied short enough so that they cannot interfere with the animal next to them. Beef and Dairy Cattle must be cross-tied with at least ½” neck rope. Cattle are required to have night ties.
15. The administration of any drug affecting the central nervous system, stimulant or depressant to any animal shown in any class is strictly prohibited without a veterinarian certificate.
16. Animals not meeting these daily requirements will be rejected by the Division Superintendents and Fair Board.
17. All Market Animals will be weighed **ONCE**; this is the final weight. All animals must be clean and dry at weigh in and have their fair ear tag in place. If your animal loses a tag before weigh in, contact the county agent or FFA advisor.
18. Market animals must have been shown in their respective classes in order to sell.
19. All animals must be fit for the sale, as they were for the show. No sick animals will be sold.
20. No private treaty sales are allowed on grounds.
21. Breeding animals entered in a lot as a pair cannot be separated and judged in individual lots.
22. Market animals must have Carbon County ear tags and cannot be shown in breeding classes.
23. No miniature breeds will be allowed in market classes.

## Superintendents Rules and Regulations

1. A Superintendent of any department will not be responsible in case of loss or accident of any entry.
2. Each Superintendent will have charge of the department assigned him/her, subject to the orders of the fair board. Each Superintendent is charged with caring for and posting judges books of this department. He/she must see that all awards are duly and properly entered, as it is only upon this record that the premiums can be paid. The judge and Superintendent must sign one page of the Judge's Book immediately after the judging.
3. It is the responsibility of the Superintendent to insure that the Judge's Book is accurate and contains all required information.
4. All Superintendents at the close of the fair shall file with the Fair Office a written detailed statement of their work, with recommendations for changes.
5. All Superintendents must enforce the rules as printed in the Premium Book, including FFA and 4-H policies and guidelines.

### **Superintendents for the 2017 Carbon County Fair:**

* Beef	Melissa Oswald 962-3806 & Chris Coombe 962-9920
* Horse	Sandi Campbell 668-7513 & Stacie Nardinger 962-9821
* Small Animal	Sheila Boggio 446-9051 & Candace Dworshak 962-3312
* Sheep & Goat	Holly Dorvall 668-7701 & Samantha Anttila 298-0233
* Llama	Refer all questions to Extension Agent Nikki Bailey 962-3522
* Swine	Jeff Krook 962-3549 & Craig Erickson 446-3239
* Dog	Carla Repac 425-0614
* Indoor Exhibits	Julie Unger 962-3619
* Kitchen	Refer all questions to Extension Agent Nikki Bailey 962-3522



**Flow Chart for Handling Business Associated with the**  
**Carbon County Fair and Fairgrounds**  
**PLEASE FOLLOW THIS ORDER WITH ANY FAIR BUSINESS**  
*-Leaders of the groups and individuals associated with the fair are in parenthesis*

# DEPARTMENT A – 4-H AND FFA ANIMAL SCIENCES

## CLASS 1 - BEEF (PROJECTS 2001 - 2099)

### **Beef Showmanship**

1. Showmanship is required.

### **Lot No.**

0101	FFA Beef Showmanship
0102	Senior 4-H Beef Showmanship
0103	Junior 4-H Beef Showmanship
0104	Novice 4-H Beef Showmanship

*General Rules and Livestock Division Rules also apply.*

### **Market Beef (Project 2001)**

1. All market beef exhibited must be owned by the exhibitor as of January 1 of the current year.
2. Market beef must have been calved after January 1 of the previous year.
3. All market beef must be weighed and ear tagged at the county weigh/tag day.
4. Market beef must weigh at least 1000 lbs to be eligible for sale.
5. Maximum Sale weight for beef is 1450 lbs. (Animals weighing up to 1600 lbs. can be sold at the auction but will be paid only for 1450 lbs. Beef over 1600 lbs. will not be eligible for sale.)
6. No horns are allowed on any Market Beef projects. No miniature steers are allowed.
7. No person other than exhibitor will be allowed to clean pens, feed or fit beef.
8. Educational posters/displays are judged at indoor project interview judging.
9. Market Beef will be divided into weight classes at the superintendents' discretion for the market beef contest.

### **Lot No.**

0105	Market Beef (state breed of animal on entry blank)
0106	Educational poster or display

### **Breeding Beef (Project 2002)**

1. Breeding Beef will not be sold at the Market Livestock Sale.
2. Crossbred must be entered as such.
3. Double lead will be used on all bulls.
4. Only one animal can be entered on each lot except cow/calf pair. Cow/calf pair cannot be separated.
5. No horns are allowed on Breeding Beef, except those breeds that have horned characteristics
6. Registration is not required; however, all entries should be typical of the class entered and of high quality. The Superintendent or judge has the final authority to designate the most appropriate class for any individual breeding beef exhibit. No miniature breeds will be allowed.
7. It is recommended that the yearling heifer be brought back as a two-year-old with calf. Remember this project is designed to start a herd.
8. No person other than exhibitor will be allowed to clean pens, feed or fit beef.
9. Educational posters/displays are judged at indoor project interview judging.

### **Lot No.**

0107	Female, under 1 year	0111	Bull over 1 year, under 2
0108	Female over 1 year, under 2	0112	Cow calf pair
0109	Female over 2 year	0113	Educational poster or display
0110	Bull under 1 year		

## **INDEPENDENT STUDY (Project 2099)**

### **Lot No**

0114 Any exhibit relating to your project

## **CLASS 2 - DAIRY (PROJECTS 2110 – 2199)**

### **Dairy Showmanship**

1. Showmanship is required.

### **Lot No.**

0201 FFA Dairy Showmanship  
0202 Senior 4-H Dairy Showmanship  
0203 Junior 4-H Dairy Showmanship  
0204 Novice 4-H Dairy Showmanship

*General Rules and Livestock Division Rules also apply.*

1. Animals in the Dairy Class will be judged on size for age, dairy type, vigor, condition, and milk production characteristics as stated by State 4-H Showmanship rules.
2. Milk production records are to accompany all milking age cows.
3. Double leads will be used on all bulls. A neck rope will be used to tie animals.
4. No person other than exhibitor will be allowed to clean pens, feed or fit dairy animals.
5. Educational posters/displays are judged at indoor project interview judging.

### **Dairy Breeding**

### **Lot No.**

0205 Dairy bull calf  
0206 Dairy heifer calf  
0207 Dairy heifer over 1 year, under 2  
0208 Dairy cow 2 years and over  
0209 Dairy bull over 1 year, under 2  
0210 Educational poster or display

## **INDEPENDENT STUDY (Project 2199)**

### **Lot No.**

0211 Any exhibit relating to your project

## **CLASS 3 - GOATS (PROJECTS 2210-2299)**

### **Goat Showmanship**

1. Showmanship is required.

### **Lot No.**

0301 FFA Goat Showmanship  
0302 Senior 4-H Goat Showmanship  
0303 Junior 4-H Goat Showmanship  
0304 Novice 4-H Goat Showmanship

*General Rules and Livestock Division Rules also apply.*

### **Market Goat**

1. All market goats must be in the exhibitor's possession by the **first Saturday in May**.
2. Market goats may be either non-bred does or wethers.
3. Market goats must not be born before January 1 of the current year
4. Market goats must weigh a minimum of 50 lbs. to be eligible for sale. Recommended but not required weight for a market goat is 90 pounds.
5. Maximum Sale weight for goats is 90 lbs. (Animals weighing up to 120 lbs. can be sold at the auction but will only be paid for 90 lbs. Goats over 120 lbs. will not be eligible for sale.)
6. Exhibitors are allowed to use halters or collars when showing their market goat.
7. Market goats must be uniformly slick shorn with 3/8 inch of hair or less at the time of arrival on the fairgrounds. Legs may have hair up to the hock and knee only.
8. All market goats should be dehorned. If horns are present, the horns must be tipped. No fresh dehorning wounds will be allowed. Any exceptions must be submitted to the Extension Agent prior to fair.
9. All market goats must be tagged at the county weigh/tag day.
10. Scrapie tag: All exhibition sheep and goats must be tagged with a USDA Scrapie tag. It is recommended that you get this tag from the person you bought the goat from. Contact the Extension Office if you do not have one.
11. No person other than exhibitor will be allowed to clean pens, feed or fit goats.
12. Educational posters/displays are judged at indoor project interview judging.

#### **Lot No.**

- |      |                               |
|------|-------------------------------|
| 0305 | Market Goat                   |
| 0306 | Educational poster or display |

### **Dairy Goat**

1. Animals in Dairy Goats class will be judged on size for age, dairy type, vigor, condition, and milk production characteristics as stated by the State 4-H Showmanship rules.
2. All Goats should be broke to lead.
3. Scrapie tag: All exhibition sheep and goats must be tagged with a USDA scrapie tag. It is recommended that you get this tag from the person you bought the goat from. Contact the Extension Office if you do not have one.
4. No person other than exhibitor will be allowed to clean pens, feed or fit goats.
5. Does only will be shown. Animals will be judged according to the American Dairy Goat Association Rules and Regulations.
6. Educational posters/displays are judged at indoor project interview judging.

#### **Lot No.**

- |      |   |
|------|---|
| 0307 | Junior Doe under 1 year   |
| 0308 | Junior Doe (dry) over 1 year, under 2                             |
| 0309 | Senior Doe (milking) over 1 year, under 2                         |
| 0310 | Senior Doe over 2 years, under 3                                  |
| 0311 | Senior Doe over 3 years   |
| 0312 | Dam and Daughter (2 senior does OR 1 senior doe and 1 junior doe) |
| 0313 | Educational poster or display                                     |

### **Breeding Meat Goat**

#### **Lot No.**

- |      |                  |
|------|------------------|
| 0314 | Doe under 1 year |
|------|------------------|

0315	Doe over 1 year, under 2
0316	Doe over 2 years, under 3
0317	Doe over 3 years
0318	Buck under 1 year
0319	Buck over 1 year, under 2
0320	Buck over 2 years, under 3
0321	Buck over 3 years
0322	Educational poster or display

### **INDEPENDENT STUDY (Project 2299)**

#### **Lot No.**

0323 Any exhibit relating to your project

### **Fiber Class**

Hair or Fiber producing animals which do not fit into another lot within their class.

#### **Lot No.**

0330 Goat

### **CLASS 4 – HORSE (PROJECTS 2301 – 2399)**

#### ***General Rules and Livestock Division Rules also apply.***

1. Levels will be passed by assessment by a horse leader. Ribbon placing does not denote passing a level. Assessments must be completed by the last day of Carbon County Horse Camp, signed by two approved assessors and on file at the Extension Office. Replacement of a project horse through veterinarian inspection (for unexpected injuries or illness) can be done only until the last day of horse camp.
2. 4-H members will exhibit at the highest level passed.
3. All horses will need health inspections by a veterinarian before arrival to the fairgrounds. All horses must have proof of receiving 4-way vaccinations for Eastern & Western Influenza, Tetanus and West Nile prior to June 1 of the current year.
4. Exhibitors entering this show must have a horse ID for each animal entered on file in the Extension Office by **May 15** of current year.
5. A parent or leader may assist a member in the following instances only: to hold a horse, check tack or give advice before the class. Horses must be groomed, fed, watered, and exercised by the exhibitor while at the county fair. **NO INSTRUCTIONS WILL BE GIVEN TO THE CONTESTANT BY ANY PARENT, LEADER OR TRAINER DURING ANY ONGOING CLASSES.**
6. For safety sake, a junior member can have the assistance of a parent or leader in the case of saddling, bridling, or changing tack.
7. No exhibitor may enter more than one horse per lot. 4-H and FFA must use different horses.
8. No riding of horses in the barn at any time.
9. Horses are encouraged to have been in training by April 1<sup>st</sup> of the current year.
10. All horses must be bridled and saddled when ridden. The exception is during the bareback equitation warm-up and class.
11. Riding helmets are required unless you have a helmet waiver on file with the superintendent.
12. Tack must be appropriate to seat.
13. No exhibitor may ride between the barns and the parking lot.
14. The 4-H or FFA member must train the horse being exhibited in the Colt to Maturity project.
15. There will be no mares with suckling foals on the fairgrounds.



16. The administration of any drug affecting the central nervous system, stimulant or depressant to a horse shown in any class is strictly prohibited without a veterinarian certificate.
17. All patterns and rules are available through the county Extension Office or local horse leader. These rules will include the state horse show rules unless noted otherwise in the fairbook.
18. Only the exhibitor of the horse may ride their horse at the fair.
19. Safety rules are to be observed at all times.
20. No stallions permitted, except yearlings.
21. Rubber water buckets may be left in the stalls overnight. All plastic buckets, feed tubs, hay nets and hay bags must be removed by 9:00 p.m. every night.
22. Schedule and/or awards for all classes may change at the discretion of the judge and/or horse committee.
23. Educational posters/displays are judged at indoor project interview judging.
24. Patterns that are posted in the barn will not be subject to change but additional challenges may be presented by the judge upon completion of the pattern by the contestant in the arena.
25. Exhibitors are required to exhibit in at least one judged class besides showmanship.
26. The superintendents (of at least 2) will decide at their discretion what penalties will be assigned for exhibitors that do not show in their assigned showmanship class.

### **Horse Showmanship**

1. Showmanship is required. All showmanship participants must compete in a premium-level riding class.

#### **Lot No.**

0401	FFA Horse Showmanship
0402	Senior 4-H Horse Showmanship
0403	Junior 4-H Horse Showmanship
0404	Novice 4-H Horse Showmanship

### **HORSEMANSHIP (Project 2301 – 2307)**

#### **Lot No.**

0405	Level 1 – Western Horsemanship	0415	Level 4 – English Horsemanship
0406	Level 2 – Western Horsemanship	0416	Level 5 – English Horsemanship
0407	Level 3 – Western Horsemanship	0417	Level 6 – English Horsemanship
0408	Level 4 – Western Horsemanship	0418	Level 7 – English Horsemanship
0409	Level 5 – Western Horsemanship	0419	Educational Display/Poster (14 x 22)
0410	Level 6 – Western Horsemanship	0420	Notebook/Journal
0411	Level 7 – Western Horsemanship		
0412	Level 1 – English Horsemanship		
0413	Level 2 – English Horsemanship		
0414	Level 3 – English Horsemanship		

### **HORSELESS HORSEMANSHIP (Project 2311 – 2313)**

#### **Lot No.**

0421	Level 1	0424	Level 4
0422	Level 2	0425	Level 5
0423	Level 3	0426	Educational Display/Poster (14 x 22) or Notebook/Journal (2 entries allowed in this lot)

**COLT TO MATURITY (Projects 2321 – 2325)****Lot No.**

0427	Halter
0428	Western 2 year old
0429	Western 3 year old
0430	Western 4 year old
0431	Western 5 year old
0432	English 2 year old
0433	English 3 year old
0434	English 4 year old
0435	English 5 year old
0436	Educational Display/Poster (14 x 22)
0437	Notebook/Journal

**WORKING RANCH HORSE (Project 2331- 2334)****Lot No.**

0438	Level 1
0439	Level 2
0440	Level 3
0441	Level 4
0442	Educational Display/Poster
0443	Notebook/Journal

**PACKING (Project 2335-2339)****Lot No.**

0444	Level 1
0445	Level 2
0446	Level 3
0447	Level 4
0448	Level 5
0449	Educational Display/Poster
0450	Notebook/Journal

**DRIVING (Project 2341-2344)****Lot No.**

0451	Level 1
0452	Level 2
0453	Level 3
0454	Level 4
0455	Level 5
0456	Educational Display/Poster
0457	Notebook/Journal

**HORSE SHOWING (Project 2345-2347)****Lot No.**

0458	Level 1	0461 Educational Display/Poster
0459	Level 2	0462 Notebook/Journal
0460	Level 3	

## **HORSE JUDGING (Project 2350)**

### **Lot No.**

0463	Horse judging
0464	Educational Display
0465	Notebook/Journal

## **GREEN HORSE (Project 2355-2358)**

### **Lot No.**

0466	Level 1
0467	Level 2
0468	Level 3
0469	Level 4
0470	Educational Display/Poster
0471	Notebook/Journal

## **CAREERS WITH HORSES (Project 2360)**

### **Lot No.**

0472	Educational Display/Poster (14 x 22)
0473	Notebook/Journal

## **INDEPENDENT STUDY (Project 2399)**

### **Lot No.**

0474	Any exhibit relating to your project
------	--------------------------------------

## **NON-PREMIUM CLASSES**

1. These classes are open to FFA and 4-H members. Only one class will be held per age division and ribbons and/or small prizes will be awarded for these classes based on decisions made by the horse committee. A minimum of 3 contestants must be entered in order to have the class. Classes may be combined at the discretion of the horse superintendents or judge. Non-premium classes do not qualify exhibitors for the State 4-H Horse Show.

### **Lot No.**

0475	Walk/Trot Bareback Equitation	0483	Trail in Hand
0476	Junior Bareback Equitation	0484	Junior Trail
0477	Senior Bareback Equitation	0485	Senior Trail
0478	Walk/Trot English Equitation	0486	Walk/Trot Western Equitation
0479	Junior English Equitation	0487	Junior Western Equitation
0480	Senior English Equitation	0488	Senior Western Equitation
0481	Freestyle Reining–Beginning (Level 1-3)	0489	Solo Musical Performance
0482	Freestyle Reining–Adv. (Level 4 & above)	0490	Pairs Musical Performance

## **CLASS 5 - POULTRY (PROJECTS 3310-3399)**

### ***General Rules and Livestock Division Rules also apply.***

1. The fair will furnish exhibition coops and bedding for poultry and pigeons.
2. No exhibitor may exhibit more than one entry per lot.
3. Entry tag must include breed.
4. Exhibitors may sell only one animal in this class per division (one 4-H, one FFA).

5. All poultry will be judged by general qualifications of the breed.
6. Exhibitors are required to be present during the judging. Exhibitors are required to take their entries to the judging table.
7. No person other than exhibitor will be allowed to clean pens, feed or fit poultry.
8. Educational posters/displays are judged at indoor project interview judging.

### **Poultry Showmanship**

1. Showmanship is required.

#### **Lot No.**

0501	FFA Poultry Showmanship
0502	Senior 4-H Poultry Showmanship
0503	Junior 4-H Poultry Showmanship
0504	Novice 4-H Poultry Showmanship

### **Poultry**

#### **Lot No.**

0506	Pen of 2 broilers or fryers
0507	Cockerel – Male fowl less than 1 year old
0508	Capon – Male fowl less than 1 year old
0509	Pullet – female fowl less than 1 year old
0510	Young Trio – 1 cockerel and 2 pullets of the same breed and age
0511	Hen – 1 year and older, but not over 2 ½ years old
0512	Rooster – 1 year and older, but not over 2 ½ years old
0513	Hen & Rooster (pair) – over 1 year, but not over 2 ½ years old
0514	Duck – (2 fowls from current year of raising – 1 <sup>st</sup> year project) or (2 fowls not over 2 ½ years old – 2 <sup>nd</sup> year project)
0515	Geese – (2 fowls from current year of raising – 1 <sup>st</sup> year project) or (2 fowls not over 2 ½ years old – 2 <sup>nd</sup> year project)
0516	Turkeys – (2 fowls from current year of raising – 1 <sup>st</sup> year project) or (2 fowls not over 2 ½ years old – 2 <sup>nd</sup> year project)
0517	Pair of fowl-one female, one male
0518	Other fowl
0519	Educational Poster/Display

### **INDEPENDENT STUDY (Project 3399)**

#### **Lot No.**

0520	Any exhibit relating to your project
------	--------------------------------------

### **CLASS 6 - RABBITS (PROJECT 3410 – 3499)**

#### ***General Rules and Livestock Division Rules also apply.***

1. The fair will furnish exhibition pens and bedding for rabbits.
2. No Exhibitor may exhibit more than one entry per lot.
3. Entry tag must include breed.
4. Exhibitors may sell only one animal per division (one 4-H, one FFA) in this class.

5. All rabbits will be judged by general qualifications of the breed.
6. Exhibitors are required to be present during the judging. Exhibitors are required to take their entries to the judging table.
7. No person other than exhibitor will be allowed to clean pens, feed or fit rabbits.
8. Educational posters/displays are judged at indoor project interview judging.

### **Rabbit Showmanship**

1. Showmanship is required.

#### **Lot No.**

0601	FFA Rabbit Showmanship
0602	Senior 4-H Rabbit Showmanship
0603	Junior 4-H Rabbit Showmanship
0604	Novice 4-H Rabbit Showmanship

### **Rabbit**

#### **Lot No.**

0605	1 Buck, under 1 year
0606	1 Buck, 1 year and under 2 years
0607	1 Buck, 2 years and over
0608	1 Doe, under 1 year
0609	1 Doe, 1 year and under 2 years old
0610	1 Doe, 2 years and over
0611	Pen of rabbits (2 rabbits of the same sex to a pen) Note: No litters allowed
0612	Educational Poster/Display board

### **INDEPENDENT STUDY (Project 3499)**

#### **Lot No.**

0613	Any exhibit relating to your project
------	--------------------------------------

### **CLASS 7 - SHEEP (PROJECT 2401-2499)**

### **Sheep Showmanship**

1. Showmanship is required.

#### **Lot No.**

0701	FFA Sheep Showmanship
0702	Senior 4-H Sheep Showmanship
0703	Junior 4-H Sheep Showmanship
0704	Novice 4-H Sheep Showmanship

### **Market Lamb**

#### ***General Rules and Livestock Division Rules also apply.***

1. All market lambs must be in the exhibitor's possession by the **first Saturday in May**.
2. Lambs entered in the market lamb class may be either ewes or wethers. No rams or partially castrated animals will be allowed to show or sell.

3. Market lambs must weigh at least 110 lbs. to be eligible for sale.
4. Maximum Sale weight for sheep is 155 lbs. (Animals weighing up to 170 lbs. can be sold at the auction but will only be paid for 155 lbs. Lambs over 170 lbs. are not eligible for sale.)
5. All market lambs must be weighed and ear tagged at the county weigh/tag day.
6. All market lambs must be slick shorn prior to the fair with a maximum wool length of no more than 1/4 inch.
7. Exhibitors ages 8 and 9 (as of October 1) will be allowed to show sheep with halter in the conformation classes without penalty.
8. Remove feed by 9:00 p.m. Water may be left in the pen.
9. No person other than exhibitor will be allowed to clean pens, feed or fit lambs.
10. Scrapie tag: All exhibition sheep and goats must be tagged with a USDA scrapie tag. It is recommended that you get this tag from the person you bought the sheep from. Contact the Extension Office if you do not have one.
11. Educational posters/displays are judged at indoor project interview judging.

**Lot No.**

- |      |                             |
|------|-----------------------------|
| 0705 | Market Lamb                 |
| 0706 | Educational Poster/ Display |

**Breeding Sheep**

1. Lambs entered as breeding stock cannot be shown as market sheep.
2. Sheep entered in the breeding class will be judged upon breed type and characteristics, quality, and development for age and must be fitted according to breed specifications.
3. In breeding class, no more than one sheep may be entered in one lot, except in the ewe and nursing lambs and sire class.
4. Breeding sheep will **NOT** be sold at the Market Livestock Auction Sale.
5. Remove feed by 9:00 p.m. Water may be left in the pen.
6. No person other than exhibitor will be allowed to clean pens, feed or fit sheep.
7. Scrapie tag: All exhibition sheep and goats must be tagged with a USDA scrapie tag. It is recommended that you get this tag from the person you bought the sheep from. Contact the Extension Office if you do not have one.
8. Educational posters/displays are judged at indoor project interview judging.

**Lot No.**

- |      |                             |
|------|-----------------------------|
| 0707 | Ewe lamb under 1 year       |
| 0708 | Ewe over 1 year, under 2    |
| 0709 | Ewe over 2 years            |
| 0710 | Ram lamb under 1 year       |
| 0711 | Ram over 1 year, under 2    |
| 0712 | Ram over 2 years            |
| 0713 | Ewe – lamb pair             |
| 0714 | Educational Poster/ Display |

**Sheep Fleece**

1. Judge will place in ¼, 3/8, ½ and fine.
2. Fleece entered should be from the current year and from exhibitors own flock.
3. One fleece per lot number.
4. Fleece should be prepared, tied with cord, and wrapped in clear plastic.

**Lot No.**

- |      |          |
|------|----------|
| 0715 | Columbia |
|------|----------|

**Lot No.**

- |      |             |
|------|-------------|
| 0721 | Rambouillet |
|------|-------------|

0716 Corriedale  
0717 Crossbred  
0718 Dorset  
0719 Hampshire  
0720 Polypay

0722 Southdown  
0723 Suffolk  
0724 Targhee  
0725 Other breeds

## **INDEPENDENT STUDY (Project 2499)**

### **Lot No.**

0726 Any exhibit relating to your project

## **CLASS 8 - SWINE (PROJECT 2510-2599)**

### **Swine Showmanship**

1. Showmanship is required.

### **Lot No.**

0801 FFA Swine Showmanship  
0802 Senior 4-H Swine Showmanship  
0803 Junior 4-H Swine Showmanship  
0804 Novice 4-H Swine Showmanship

### **Market Swine**

#### ***General Rules and Livestock Division Rules also apply***

1. All market swine must be in the exhibitor's possession by the first Saturday in May.
2. Market swine must weigh at least 215 lbs. to be eligible for sale. All market swine must weigh between 220-290 pounds to compete in the Grand and Reserve Championship.
3. Maximum Sale weight for swine is 290 lbs. (Animals weighing up to 330 lbs. can be sold at the auction but will only be paid for 290 lbs. Swine over 330 lbs. are not eligible for sale.)
4. Light weight swine are 200 – 219 pounds. Heavy weight swine are 291 pounds and over.
- 5. All market swine must be tagged two weeks prior to fair.**
6. No person other than exhibitor will be allowed to clean pens, feed or fit swine.
7. No boars or partially castrated animals will be allowed in the market classes.
8. Swine wash racks will be closed during livestock weigh-ins.
9. Educational posters/displays are judged at indoor project interview judging.

### **Lot No.**

0805 Market Swine  
0806 Educational poster/display

### **Breeding Swine**

#### ***General Rules and Livestock Division Rules also apply***

1. No more than one animal may be entered in one lot, except the sow and litter.
2. All animals must be good representatives of the breed on which they are exhibited.
3. Breeding swine will **NOT** be sold at the Market Livestock Auction Sale.
4. Swine wash racks will be closed during livestock weigh-ins.
5. No person other than exhibitor will be allowed to clean pens, feed or fit swine.

6. Educational posters/displays are judged at indoor project interview judging.

**Lot No.**

0807	Boar, age 2 -6 months
0808	Boar, over 6 months
0809	Gilt, 2 – 6 months
0810	Sow 6 – 18 months
0811	Sows and 6 or more piglets
0812	Educational poster/display

**INDEPENDENT STUDY (Project 2599)**

0813	Any exhibit relating to your project
------	--------------------------------------

**CLASS 9 – CAT (Project 3010-3030)**

1. All cats must be brought in a carrier & wear a harness or collar with attached leash when out of carrier.
2. All cats must be removed from the fairgrounds after the judging.
3. Proof of shots for distemper and rabies are required; bring proof to cat show.
4. Showmanship attire should be worn for the showmanship class.
5. Projects are judged at indoor project interview judging.
6. Cat showmanship participants must also designate Lot. 0912 or Lot. 0913 for judging purposes.

**Cat Showmanship**

**Lot No.**

0901	Senior 4-H Cat Showmanship
0902	Junior 4-H Cat Showmanship
0903	Novice 4-H Cat Showmanship

**Cat Projects**

**Lot No.**

0904	Toy for a cat
0905	Scratching post or cat “condo”
0906	Harness, collar or leash
0907	Cat cage
0908	Bed for a cat
0909	Display on breeds of cats
0910	Report or poster
0911	Any other article pertaining to the cat project (ex. Grooming box, scrapbook, etc)
0912	Kitten (under 1 yr)
0913	Cat (1 yr or older)

**INDEPENDENT STUDY (Project 3099)**

**Lot No.**

0914	Any exhibit relating to your project
------	--------------------------------------

**CLASS 10 - DOGS (PROJECT 3110-3199)**

1. Proof of vaccination required. Rabies shots must be current. Distemper-parvo shots must be renewed every year.



2. All dogs must be on leash (excluding competition) and under control at all times. Once judging is completed, dogs must be removed from the fairgrounds.
3. Showmanship attire is required.
4. Miscellaneous projects will be judged at indoor project interview judging.
5. Judging will be done on the length of training, not the age of the dog.
6. No treats will be given to the dog during any part of the show.
7. **All members competing in fair with dogs are urged to attend all obedience, showmanship & agility practices available to them. The practices are progressive, so members are strongly urged to attend from the beginning. In order to participate in dog showmanship/obedience at fair, members and their dogs should attend a minimum of 2 obedience classes or have had 1 individual class with the dog superintendent. If the member and their dog have not had previous classes, they may be disqualified from showing their dog at fair.**

### **Dog Showmanship**

1. Dogs may be shown in a choke chain or a buckle collar and a 6 foot lead. No pinch collars.
2. This contest is designed to judge the bond between the handler and the dog. On leash – trot, stand for exam.
3. Showmanship is required.

#### **Lot No.**

1001	Senior 4-H Dog Showmanship
1002	Junior 4-H Dog Showmanship
1003	Novice 4-H Dog Showmanship

### **Dog Obedience**

1. Dog must be shown with a standard choke chain and a 6-foot lead. No pinch collars. No dog treats are allowed while the dog is being shown.
2. Please enter the lot number that corresponds with the year in which you are showing your dog in the 4-H obedience ring, not the age of the dog or the number of years you have been in the project.

#### **Lot No.**

1004	First year dog – 1 minute sit, 3 minute down, pattern, recall with finish to a heal position; all on leash.
1005	Second year dog - 1 minute sit, 3 minute down, handler drops leash and moves out about 8 – 10 feet, pattern, loose leash over neck; recall with finish to a heal position; off leash.
1006	Third year dog - 1 minute sit, 3 minute down, handler out of sight, pattern, recall with a down in the middle then finish to a heal position; all off leash.
1007	Fourth year dog – 3 minute sit, 5 minute down, handler out of sight, pattern, recall with a down in the middle then finish to a heal, retrieve a dumb bell on flat; off leash
1008	Fifth year+ dog – 3 minute sit, 5 minute down, handler out of sight, pattern, recall with down in the middle to a sit then finish to a heal, retrieve dumb bell over a jump; off leash

### **Dog Agility**

#### **Lot No.**

1009	Level 1 – Dogs compete on or off leash. Equipment may include gates, hoops & tunnels. Easy course.
1010	Level 2 – Dogs compete off leash. Equipment will include that for Level 1 plus bar jumps. More difficult course than Level 1.
1011	Level 3 – Dogs compete off leash. Equipment will include that for Level 2 plus weave poles. More difficult than Level 2.
1012	Advanced – Dogs compete off leash. All equipment will be used. Courses will continue to be more challenging. Dogs & their exhibitors may remain in this level as long as they wish.

## UNIT 1 – WIGGLES N’ WAGS

### Lot No.

1013	Feeding/Nutrition	1020	Health
1014	Whelping	1021	Dog Parts
1015	Item made for dog/puppy	1022	Behavior Chart
1016	Problem dogs	1023	Helping Dogs
1017	Dogs & Rules	1024	Basic Training
1018	Grooming	1025	Dog equipment
1019	Dog breeds	1026	Any other exhibit relating to the project

## UNIT 2 – BOUNDING AHEAD

### Lot No.

1027	Breed differences and origination	1032	Project experiments
1028	Health	1033	Traveling with a dog
1029	Feeding	1034	Rules for showmanship
1030	Dog careers	1035	Item made for dog
1031	Getting a dog	1036	Any other exhibit relating to the project

## UNIT 3 - POINTING THE WAY

### Lot No.

1037	Dog Behavior	1043	Careers
1038	Dogs that help	1044	Dogs and the law
1039	Budgeting for dogs	1045	Animal Welfare
1040	Feeding	1046	Any other exhibit relating to the project
1041	Scent discrimination		
1042	Health and Diseases		

## INDEPENDENT STUDY (Project 3199)

### Lot No.

1050	Any exhibit related to your project
------	-------------------------------------

## CLASS 11 - POCKET PETS (PROJECT 3210-3230)

1. Judging will be on the exhibit (pet), not conformation.
2. All pocket pets must be confined to a portable, **ESCAPE PROOF CAGE OR CONTAINER**, suitable for that particular species. Exhibitors must provide their own cages.
3. All pocket pets are to be brought in the day of the show and go home upon the completion of the show.
4. Pocket pets are allowed to compete in the Small Animal Sweepstakes.

## Pocket Pet Show

### Lot No.

1101	Pocket Pet Show
------	-----------------

## Pocket Pet Projects

### Lot No.

1102	Notebook/Educational display	1103	Any item made for your pet
------	------------------------------	------	----------------------------

## **INDEPENDENT STUDY (Project 3299)**

### **Lot No.**

1104 Any exhibit related to your project

## **CLASS 12 - VETERINARY SCIENCE (PROJECT 2610 –2699)**

### **FROM AIREDALES TO ZEBRAS LEVEL 1**

#### **Lot No.**

- 1201 Create an exhibit (notebook, poster etc.) on different breeds within a chosen animal species including photos, country of origin, color, size and animal behavior.
- 1202 Create a basic needs notebook (or poster) for a specific animal
- 1203 Compare the life stages of at least two different species
- 1204 Exhibit charts of vital signs (temperature, respiration, and heart rate) of a chosen animal
- 1205 Identify different types of feed for an animal of your choice
- 1206 Compare at least three different food labels (feed tags) for an animal
- 1207 Create a common disease display for an animal
- 1208 Exhibit knowledge on proper dosage of medicines
- 1209 Exhibit knowledge of careers in animal science
- 1210 Exhibit knowledge of veterinary tools and equipment used.
- 1211 Any other exhibit relating to the project

### **ALL SYSTEMS GO LEVEL 2**

#### **Lot No.**

- 1212 Exhibit charts of vital signs (temperature, respiration, and heart rate) comparing three different animals
- 1213 Exhibit knowledge of stress in animals
- 1214 Exhibit knowledge of immunity
- 1215 Exhibit knowledge of biosecurity (diseases and control programs)
- 1216 Demonstrate knowledge of parasites including life cycle and control measures
- 1217 Compare bacterial, viral, parasitic, and fungal diseases in a chosen animal
- 1218 Demonstrate knowledge of feed

contamination

- 1219 Exhibit veterinarian specialty fields of study
- 1220 Exhibit knowledge of animal welfare and animal rights
- 1221 Notebook on job shadowing a vet
- 1222 Demonstrate knowledge of reading and interpreting medicine labels
- 1223 Any other exhibit relating to the project

### **ON THE CUTTING EDGE LEVEL 3**

#### **Lot No.**

- 1224 Exhibit knowledge of human/animal bonding and behavior training
- 1225 Exhibit knowledge of animal reproduction including natural, artificial insemination, embryo transplant, and cloning
- 1226 Exhibit knowledge of the importance of genetics including genetic diseases, mitosis, and meiosis
- 1227 Exhibit knowledge of the animal cell
- 1228 Exhibit knowledge of zoonotic disease and prevention
- 1229 Create a scrapbook on disease including bacterial, viral, parasitic, fungal, and genetic diseases
- 1230 Exhibit knowledge of pet population control
- 1231 Demonstrate knowledge of animal a careers
- 1232 Demonstrate knowledge of medical technology
- 1233 Explore college career options for the animal sciences
- 1234 Any other exhibit relating to the project

### **INDEPENDENT STUDY (Project 2699)**

#### **Lot No.**

- 1235 Create a veterinary notebook/poster
- 1236 Any exhibit pertaining to the project

# PLANT SCIENCES - DEPARTMENT B

## CLASS 13 – FIELD CROPS SCIENCE - (Projects 4010-4099)

### Special Rules:

1. All exhibits must be from this year's crop except threshed grain and beans.
2. Each exhibit must be from crops grown by or assisted with by the exhibitor.
3. Each sheaf should be not less than 5 ½ or more than 7 inches in circumference at the first tie below the head. There must be at least three (3) ties and leaves removed.
4. Sugar Beets – All feeder roots ½ inch or less in diameter should be removed. The beets should be uniform in size and free from dirt and disease, well topped, flat, no stem, and ½ inch of leaf scar.
5. Threshed exhibits will consist of 1 quart lots of grain or seed, contained in glass jars and be free from older, discolored kernels and foreign matter. Label the variety.
6. All hay bale sections will be 5-8 pounds and must be covered with plastic.

### Hints to Grain Exhibitors:

- The purity and quality of a sample are the two points to remember when preparing a sample of threshed grain for show.
- Purity is valued at about 35% and quality at 65%.

### THRESHED

#### Lot No.

1301	Winter Wheat - 1 quart	1312	Legume Hay - 8 inches, second cutting
1302	Spring Wheat - 1 quart	1313	Grass hay - 8 inches
1303	Barley – 2 row, feed grade, 1 quart	1314	Legume Grass mixed Hay - 8 inches, first cutting
1304	Barley - 6 row, feed grade, 1 quart		
1305	Barley – 2 row, malt, 1 quart	1315	Legume Grass mixed Hay - 8 inches, second cutting
1306	Oats - 1 quart		
1307	Great Northern Beans - 1 quart	1316	Sugar beets – 6 beets
1308	Pinto Beans - 1 quart	1317	Red field potatoes – 4 potatoes
1309	Corn - 6 ears in the husk	1318	White field potatoes – 4 potatoes
1310	Corn - 3 corn stalks, roots wrapped in clean plastic, dirt removed	1319	Triticale Hay - 8 inches
1311	Legume Hay - 8 inches, first cutting	1320	Beans - 5 Bean plants and pods, Great Northern or Pinto

### SHEAF

#### Lot No.

1321	Winter Wheat	1324	Barley 6 row
1322	Spring Wheat	1325	Barley Malt 2 row
1323	Barley 2 row		

### WHEAT and/or BARLEY GROWERS HELPER (Project 4010/4030)

#### Lot No.

1326	Display showing Stages of growth	1328	Notebook
1327	Educational Display	1329	Poster

**JR. WHEAT and/or BARLEY GROWER (Project 4011/4031)**

Enter exhibits relating to your project

**Lot No.**

1330	Variety Notebook	1333	Notebook
1331	Pest (insect, weed, disease) notebook	1334	Poster
1332	Educational Display		

**SR. WHEAT and/or BARLEY GROWER (Project 4012/4032)**

Enter exhibits relating to your project

**Lot No.**

1335	Grain sample (threshed seed, 1 quart jar, and/or sheaf) and records	1337	Notebook
		1338	Poster
1336	Educational Display		

**PRACTICAL CROP PRODUCTION (Project 4020)****Lot No.**

1339	Notebook	1341	Poster
1340	Educational Display	1342	Other, up to 3 items

**INDEPENDENT STUDY (Project 4099)****Lot No.** 1343 Any exhibit relating to your project**CLASS 14 - WEED SCIENCE (PROJECT 4110-4199)**

1. Mounting cards should be lightweight, white, cardboard or poster board 8 ½" x 11" OR 16" x 11" (140 pound index card is good). A three ring binder is suggested for easy storage and display. Specimens should include roots, stems, leaves, and flowers when possible.

**UNIT 1 – WEED WISE (Project 4110)****Lot No.**

1401	A standard size (12" x 18") wooden plant press
1402	Mounted exhibit of 12 weeds (7 annuals, 2 biennials, and 3 perennial)
1403	Educational display in area of interest in Weed project (Unit Options)

**UNIT 2 – WEEDS ON THE MOVE (PROJECT 4120)****Lot No.**

1404	Mounted exhibit of 18 weeds (include at least 2 biennials and 3 perennials)
1405	Educational display in are of interest in weed project or a unit requirement or option
1406	Other

**UNIT 3 – WEED-N-SEED (Project 4130)****Lot No.**

1407	Mounted exhibit of 20 weeds (include at least 3 biennials and 3 perennials). No duplication with Unit I or Unit II.
1408	Educational display in are of interest in weed project or a unit requirement or option.
1409	Other

#### **UNIT 4 – ADVANCED WEED SCIENCE (Project 4140)**

##### **Lot No.**

- 1410 Mounted exhibit of 8 weeds known to be dangerous or poisonous to livestock with information suggested in unit requirement No. 1.
- 1411 Educational display in area of interest in weed project or a unit requirement or option
- 1412 Other

#### **INDEPENDENT STUDY (Project 4199)**

##### **Lot No.**

- 1413 Any exhibit relating to your project

#### **CLASS 15 - HORTICULTURE/VEGETABLE GARDENS (Project 4210 – 4299)**

1. Exhibits must contain the specified number of vegetables.
2. Exhibit no more than two items per level of gardening you are enrolled in.
3. Vegetables will be judged for uniformity (size and shape), maturity, varietal characteristics, and freedom from disease, insects, and injury.
4. All vegetables must be placed on a white 9” paper/foam plate for exhibit. A plastic bag should be placed over the paper plate and exhibit. The top on all root crops should be 1 inch long.
5. All exhibits must be from this year’s crop and from the exhibitors own garden.
6. Vegetables should be washed only as a last resort. Clean vegetables with a soft brush or facial tissue to remove loose dirt.
7. Keep the vegetables as fresh as possible before exhibiting.
8. Foliage on flowers should be removed unless it enhances the blossom.
9. Vases/containers must be provided by the exhibitor. Use creativity - the type of container can enhance your flower display. However, the container will not be considered for judging. Foam cups or tin cans are not permissible containers.

#### **UNIT 1 - BUDDING GARDENERS (Project 4210)**

##### **Lot No**

- |      |                                    |      |                                      |
|------|------------------------------------|------|--------------------------------------|
| 1501 | Identify plant parts and functions | 1508 | Flower Arranging                     |
| 1502 | Perennial flowers                  | 1509 | Grow plants indoors in a dish garden |
| 1503 | Identify what plants need to grow  | 1510 | Grow vegetables in containers        |
| 1504 | Composting                         | 1511 | Plans for an outdoor garden          |
| 1505 | House Plants                       | 1512 | Compare vegetable varieties          |
| 1506 | Annual Flowers                     | 1513 | Other                                |
| 1507 | Herbs                              |      |                                      |

#### **UNIT 2 - BRANCHING OUT (Project 4220)**

##### **Lot No.**

- |      |                                       |      |  |
|------|---------------------------------------|------|--|
| 1514 | Terrarium                             | 1521 | Soil Testing                             |
| 1515 | Notebook of horticulture terms        | 1522 | Insect damage on plants                  |
| 1516 | Conduct experiments about plant needs | 1523 | Records on two different types of plants |
| 1517 | Landscape Project                     | 1524 | Perennial Flowers                        |
| 1518 | Hydroponics                           | 1525 | Annual Flowers                           |
| 1519 | Succulents                            | 1526 | House Plants                             |
| 1520 | Grow a transplant                     | 1527 | Other                                    |

### UNIT 3 - DIGGING DEEPER (Project 4230)

#### Lot No.

1528	Build a cold frame and grow plants in it	1535	Develop a marketing plan for garden produce
1529	Make a site analysis and landscape plan	1536	Perennial flowers
1530	Herbs	1537	Annual flowers
1531	Forcing bulbs	1538	House plants
1532	Organic vs. chemical fertilizing	1539	Landscape project
1533	Perennial division	1540	Terrarium
1534	Explore horticulture and gardening careers	1541	Other

### VEGETABLE GARDENS

Special rules:

1. Anyone enrolled in any of the above units may enter Vegetable Garden.
2. Only one entry per lot per exhibitor will be allowed.

#### Lot No:

1542	Beans, green in a pod (12)	1563	Peas (12 pods)
1543	Beans, yellow in a pod (12)	1564	Peppers, green (3)
1544	Beets, table (6)	1565	Peppers, jalapeno (3)
1545	Brussel Sprouts (4)	1566	Potatoes, red (6)
1546	Cabbage (1head)	1567	Potatoes, white (6)
1547	Broccoli (1 head)	1568	Pumpkin (1)
1548	Carrots, (6)	1569	Radishes (6, 1 bunch)
1549	Cauliflower (1head)	1570	Rutabaga (3)
1550	Corn, sweet in husk (3)	1571	Squash (1)
1551	Cucumbers, pickling (3)	1572	Spinach (3 plants with root)
1552	Cucumbers, slicing (3)	1573	Tomatoes, large fruited varieties (6)
1553	Eggplant (1)	1574	Tomatoes, pear and cherry sorts (12)
1554	Kohlrabi (3)	1575	Turnips (6)
1555	Garlic (1 bulb)	1576	Any other vegetable
1556	Lettuce, head (1)	1577	Strawberries (1 Cup)
1557	Lettuce, leaf (4 leaves)	1578	Raspberries (1 Cup)
1558	Onions, green (6)	1579	Cherries (1cup)
1559	Onions, dried white (6)	1580	Apples (4)
1560	Onions, dried red (6)	1581	Rhubarb (4 stalks)
1561	Onions, dried yellow (6)	1582	Any other Fruit
1562	Parsnips (3)		

### INDEPENDENT STUDY – (Project 4199)

#### Lot No.

1583	Any exhibit relating to your project
------	--------------------------------------

# MECHANICAL SCIENCES – DEPARTMENT C

## CLASS 16 - AEROSPACE (Project 5010-5099)

### UNIT 2 - LIFT OFF (Project 5010)

#### Lot No.

- 1601 Rocket from a kit.
- 1602 Explore aerospace careers
- 1603 Make and read a map
- 1604 Poster or display of different types of aircraft
- 1605 Any model rocket or airplane not built from a kit
- 1606 Poster or display explaining how different types of weather affect flying or a chart of one week's weather and your analysis of the flying conditions
- 1607 A handmade kite
- 1608 Poster or display of the parts of an airplane
- 1609 Display related to the International Phonetic Alphabet
- 1610 Other

### UNIT 3 - REACHING NEW HEIGHTS (Project 5020)

#### Lot No.

- 1611 Rocket from a kit
- 1612 Make a paper flight simulator
- 1613 Make a feather wing glider
- 1614 Build a controllable glider
- 1615 A fighter kite that can pitch, roll, and yaw.
- 1616 Any model rocket or airplane not built from a kit
- 1617 Display showing helicopter parts and their functions
- 1618 Make a hang glider
- 1619 Other

### UNIT 4 - PILOT IN COMMAND (Project 5030)

#### Lot No.

- 1620 Rocket from a kit
- 1621 Construct and use an altitude tracker
- 1622 Plan a flight route
- 1623 Design navigation systems
- 1624 Explore micro gravity environments
- 1625 Explore current issues in aerospace
- 1626 Complete a career profile
- 1627 Construct a flat style box kite
- 1628 Any model rocket or airplane not built from a kit
- 1629 Other

### INDEPENDENT STUDY (Project 5099)

#### Lot No.

- 1630 Any exhibit relating to your project



## **CLASS 17 - BICYCLE (PROJECT 5110 –5199)**

1. To participate in the Bicycle riding and safety course, you must enter at least one project in one of the other lot numbers related to your unit.

### **UNIT 1 YOU AND YOUR BICYCLE (Project 5110)**

#### **Lot No.**

- |      |   |
|------|---|
| 1701 | Educational Poster relating to the project (for example safety, maintenance, rules) |
| 1702 | Educational Display relating to the project   |
| 1703 | Bicycle course  |

### **UNIT 2 CARING FOR YOUR BICYCLE (Project 5120)**

#### **Lot No.**

- |      |   |
|------|---|
| 1704 | Educational Poster relating to the project (for example safety maintenance and rules) |
| 1705 | Educational Display relating to the project   |
| 1706 | Bicycle course  |

### **UNIT 3 MASTERING BICYCLE SKILLS (Project 5130)**

#### **Lot No.**

- |      |   |
|------|---|
| 1707 | Educational Poster relating to the project (for example accessories, bicycle hiking gear) |
| 1708 | Educational Display relating to the project   |
| 1709 | Bicycle course  |

### **UNIT 4 YOUR BICYCLE COMMUNITY (Project 5140)**

#### **Lot No.**

- |      |   |
|------|---|
| 1710 | Educational Poster relating to the project (for example accessories, bicycle hiking gear) |
| 1711 | Educational Display relating to the project   |
| 1712 | Bicycle course  |

### **INDEPENDENT STUDY (Project 5199)**

#### **Lot No.**

- |      |                                      |
|------|--------------------------------------|
| 1713 | Any exhibit relating to your project |
|------|--------------------------------------|

## **CLASS 18 - ELECTRICITY (Project 5210 – 5299)**

### **UNIT 1 – MAGIC OF ELECTIRICTY (Project 5210)**

#### **Lot No.**

- |      |                                   |      |  |
|------|-----------------------------------|------|--|
| 1801 | Build a homemade flashlight       | 1807 | Build a homemade galvanometer                                  |
| 1802 | Build a simple switch             | 1808 | Build a homemade electric motor                                |
| 1803 | Display or poster of conductors   | 1809 | An educational poster or display about electricity in the home |
| 1804 | Display or poster about magnetism |      |  |
| 1805 | Build a homemade compass          | 1810 | Other  |
| 1806 | Build a homemade electro-magnet   |      |  |

**UNIT 2 - INVESTIGATING ELECTRICITY (Project 5220)****Lot No.**

1811	Educational display of Ohm's law\	1816	Build a homemade momentary switch
1812	Display or poster about conductors and insulators	1817	Build a homemade rocket launcher
1813	Build a homemade circuit	1818	Build a homemade burglar alarm
1814	Poster identifying the components of a wiring diagram	1819	An educational poster or display about electricity in the home
1815	Build a homemade three-way switch	1820	Other

**UNIT 3 - WIRED FOR POWER (Project 5230)****Lot No.**

1821	Create a basic electrical tool kit		electric meter
1822	Display or poster showing the different types of receptacles	1826	Diagram of your home wiring circuits
1823	Display or poster showing how to measure electricity usage	1827	An educational poster or display about electricity in the home
1824	Display or poster or types of wires and cables	1828	Replace a switch – display showing you doing this
1825	Display or poster showing how to read an	1829	Other

**UNIT 4 - ENTERING ELECTRONICS (Project 5240)****Lot No.**

1830	Build a homemade 6-8 watt amplifier	1837	Build a simple light meter
1831	Display or poster showing how a diode works	1838	Build an amplifier
1832	Display showing how a transistor regulates flow	1839	Build a homemade SCR intruder alarm
1833	Build an alarm that reacts to light	1840	A display or poster of different electronic parts
1834	Display showing how LEDs work	1841	An educational display or poster about electronics
1835	Build a homemade flasher	1842	Other
1836	Display showing how a photocell works		

**INDEPENDENT STUDY (Project 5299)****Lot No.**

1843	Any exhibit relating to your project
------	--------------------------------------

**CLASS 19 - SMALL ENGINES (Project 5310-5399)****UNIT 1 - CRANK IT UP! (Project 5310)****Lot No.**

1901	Picture or poster showing what you have learned about small engines
1902	Display of basic tools needed to maintain a small engine
1903	An educational display related to what you have learned about two-cycle engines
1904	An educational display related to what you have learned about four-stroke engines
1905	An educational display showing proper maintenance and care of a lawn mower

- 1906 An educational display of proper safety labels and procedure for small engines
- 1907 An educational display of small engine parts with a brief explanation of the purpose of the parts and how they work
- 1908 Display related to some system that you learned about in small engines (filters, cooling, ignition, etc)
- 1909 Any other educational display or poster

**UNIT 2 – WARM IT UP! (Project 5320)**

**Lot No.**

- 1910 An educational display comparing the different types of engines
- 1911 An educational poster illustrating and explaining the internal parts of an engine
- 1912 An educational display showing how transmissions work
- 1913 An educational display showing how to conduct a compression check
- 1914 An educational display showing how to adjust a carburetor
- 1915 A display using a real small engine with a brief explanation showing steps in preparing a small engine for storage
- 1916 Carburetor parts display board with a brief explanation of the purpose of the parts and how they work together
- 1917 An income and expense record of your lawn mowing business, including costs, hours worked, pay for individual jobs, etc.
- 1918 Any other educational display or poster

**UNIT 3 – TUNE IT UP! (Project 5330)**

**Lot No.**

- 1919 An educational display showing how to use diagnostic tools on small engines
- 1920 An educational display showing how to tear down and reassemble a small engine
- 1921 An educational display related to the electric system of a small engine
- 1922 An educational display about emissions systems on small engines and future trends
- 1923 An educational display showing how to remove and sharpen a mower blade
- 1924 An educational display about careers in small engines
- 1925 An educational display about your work in finding resources about small engines on the internet.
- 1926 An educational display about troubleshooting common problems with small engines
- 1927 An educational display about small engines design
- 1928 Any other educational display or poster

**INDEPENDENT STUDY (Project 5399)**

**Lot No.**

- 1929 Any exhibit relating to your project

**CLASS 20 - WOODWORKING (Projects 5410 – 5499)**

1. 4-H members may enter only one entry per lot number.
2. Enter unlike exhibits from Working Plans for 4-H Woodworking Project books or other exhibit of comparable carpentry level.

**UNIT 1 - MEASURING UP (Project 5410)**

**Lot No.**

- 2001 Sandpaper block

2002	A rabbit puzzle
2003	A wood airplane
2004	A wood box
2005	A letter holder
2006	A picture frame
2007	Any other item made from other plans, books or resources
2008	Any other item made from a kit
2009	An educational display or poster showing anything related to the woodworking project (for example, the care of tools, wood types, safety, materials, techniques, etc)

## **UNIT 2 - MAKING THE CUT (Project 5420)**

### **Lot No.**

2010	A tool box
2011	A bird house
2012	A sawhorse
2013	A wood whistle
2014	A foot stool
2015	A display of wood types
2016	Any other item made from other plans, books, or resources
2017	Any other item made from a kit
2018	An educational display or poster showing anything related to the woodworking project (for example, the care of tools, safety, materials, techniques, etc).

## **UNIT 3 - NAILING IT TOGETHER (Project 5430)**

### **Lot No.**

2019	A boomerang
2020	A belt buckle
2021	A simple puzzle
2022	A book shelf
2023	Any other item made from other plans, books or resources
2024	Any other item made from a kit
2025	An educational display or poster showing anything related to the woodworking project (for example, the care of tools, safety, materials, techniques, etc).

## **UNIT 4 – FINISHING UP (Project 5440)**

### **Lot No.**

2026	A wood vehicle
2027	A tabletop hockey game
2028	A step stool or chair
2029	A toy dog
2030	A door knocker
2031	Any other item made from other plans, books or resources
2032	Any other item made from a kit
2033	An educational display or poster showing anything related to the woodworking project (for example, the care of tools, safety, materials, techniques, etc).

## **INDEPENDENT STUDY (Project 5499)**

### **Lot No.**

2034 Any exhibit relating to your project

## **CLASS 21 ROBOTICS (Projects 5510-5599)**

### **ROBOTICS (Project 5510-5520)**

#### **Lot No.**

2101 Level 1: Next Technology, up to 3 exhibits

2102 Level 2: Next Steps, up to 3 exhibits

### **JUNK DRAWER ROBOTICS (Project 5530-5540)**

#### **Lot No.**

2103 Level 1: Give Robotics A Hand, up to 3 exhibits

2104 Level 2: Robots on the Move, up to 3 exhibits

2105 Level 3: Mechatronics, up to 3 exhibits

### **INDEPENDENT STUDY (Project 5599)**

#### **Lot No.**

2106 Any exhibit relating to your Robotics project.

## **NATURAL SCIENCES – DEPARTMENT D**

### **CLASS 22 - FORESTRY (PROJECT 6010-6099)**

1. Mounting cards should be light weight, white, cardboard or poster board 8 ½” X 11” or 16”x 11” (140 pound index card is good). A three-ring binder is suggested for easy storage and display. Specimens should include roots, stems, leaves, and flowers where possible.
2. Educational displays may consist of groupings of leaves, bark, stems, or related to any aspect of forestry. Displays should be presented in a clear, concise, and interesting manner. The purpose of educational displays is to learn more about the importance of forest ecosystems and forest life.

### **UNIT 1 – FOLLOW THE PATH (Project 6010)**

#### **Lot No.**

- 2201 Exhibit of at least 5 different dried leaves/needles from coniferous and deciduous trees living in Montana collected during the year – mounted, labeled and identified according to species.
- 2202 Exhibit a minimum of 5 native Montana trees showing leaf, twig and fruit from each species.
- 2203 Poster or educational display relating to some activity in Unit 1 (for example, estimating tree age by rings, parts of a tree, drawing of a root system, forest habitats, forest recreation, etc.).
- 2204 Journal record showing where 10 different leaves/trees are located and the date you found them.
- 2205 A photo story of a visit to a state forest or other forest ecosystem.
- 2206 A leaf chain or dried leaf collage
- 2207 Diagram of a tree with 7 parts labeled
- 2208 Display showing connections between trees and other organisms.
- 2209 Plant in a clear jar showing the root system of a tree seedling.
- 2210 Fruit (cones, nuts, etc.) of ten different tree species. Identify and explain the differences.
- 2211 Any other item

## **UNIT 2 - REACH FOR THE CANOPY (Project 6020)**

### **Lot No.**

- 2212 Exhibit of at least 10 different dried leaves/needles from coniferous and deciduous trees living in Montana collected during the year – mounted, labeled and identified according to species.
- 2213 Exhibit a minimum of 8 native Montana trees showing leaf, twig and fruit from each species.
- 2214 Poster or educational display relating to some activity in Unit 2 (for example, how water moves through a tree, photosynthesis, succession, forest systems, etc).
- 2215 A photo journal of a visit to a local park or forest.
- 2216 Photo-journal or field guide on the habitat of 10 organisms that use trees.
- 2217 Cross section of a tree (real or from a book) with explanation of tree's history.
- 2218 Exhibit explaining the fire triangle and forest fire prevention.
- 2219 Diagram indicating which part of a tree various diseases affect.
- 2220
- 2221 Plant in a clear jar showing the root system of a tree seedling.
- 2222 Fruit (cones, nuts etc) of ten different tree species. Identify and explain the differences.
- 2223 Any other item

## **UNIT 3 – EXPLORE THE DEEP WOODS (Project 6030)**

### **Lot No.**

- 2224 Exhibit of at least 20 different dried leaves/needles from coniferous and deciduous trees living in Montana collected during the year – mounted, labeled and identified according to species.
- 2225 Exhibit a minimum of 15 native Montana trees showing leaf, twig and fruit from each species.
- 2226 Poster or educational display relating to some activity in Unit 3 (for example, identifying trees by their bark, biomes, forest products, etc.).
- 2227 A photo-journal of your visit with a “tree informant” to a local park or forest.
- 2228 Write a taxonomic key for 5 different leaves you collected.
- 2229 A display of 5 bark rubbings you collected and the identification of each tree.
- 2230 Display showing the fruits or seeds of at least 10 trees in your area.
- 2231 Any other item

## **INDEPENDENT STUDY (Project 6099)**

### **Lot No.**

- 2232 Any exhibit relating to your project

## **CLASS 23 – ENTOMOLOGY (PROJECTS 6110 – 6199)**

1. The collection must be neatly arranged in groups according to Order.
2. The insects must be unbroken and mounted according to the directions given in the 4-H Entomology Manual.
3. The date and locality labels must be of the correct size and properly placed on the pin.
4. Collection boxes showing advertising will not be accepted. Boxes must be painted or covered with plain paper. Boxes made by the exhibitor are preferred.

## **UNIT 1 - CREEPY CRAWLIES (Project 6110)**

### **Lot No.**

- 2301 Collection of at least 25 different kinds of adult insects – mounted, labeled, and identified, including at least five orders, and including the Order Lepidoptera (for first year members in Level 1)
- 2302 Collection of at least 30 different kinds of adult insects (Five which you haven't exhibited before) – mounted, labeled, and identified including at least five Orders. (for second year members in Level 1)

- 2303 Collection of at least 35 different kinds of adult insects (Five which you haven't exhibited before) – mounted, labeled, and identified including at least five Orders. (for third year members in Level 1)
- 2304 Exhibit or poster of equipment, constructed or purchased by the member, and used for insect collection and mounting.
- 2305 Poster relating to some activity in Unit 1 (for example, insect behavior, insect communications, insect movement, insect habits, etc).
- 2306 Other

**UNIT 2 – WHAT’S BUGGING YOU? (Project 6120)**

**Lot No.**

- 2307 Collection of at least 50 different kinds of adult insects – mounted, labeled, and identified, including at least five orders (for first year members in Level 2)
- 2308 Collection of at least 60 different kinds of adult insects (ten which you haven't exhibited before) – mounted, labeled, and identified including at least five Orders. (for second year members in Level 2)
- 2309 Collection of at least 70 different kinds of adult insects (ten which you haven't exhibited before) – mounted, labeled, and identified including at least five Orders. (for third year members in Level 2)
- 2310 Exhibit or poster of special equipment made as part of Unit 2, such as a separator, an extractor, etc.
- 2311 Poster or display relating to some activity in Unit 2 (for example, insect traps, careers, habitats, etc).
- 2312 Other

**UNIT 3 - DRAGONS, HOUSE, AND OTHER FLIES (Project 6130)**

**Lot No.**

- 2313 Collection of at least 85 different kinds of adult insects – mounted, labeled, and identified according to order (for first year members in Level 3)
- 2314 Collection of at least 120 different kinds of adult insects – mounted, labeled, and identified according to order. (for second year members in Level 3)
- 2315 Collection of at least 155 different kinds of adult insects – mounted, labeled, and identified according to order. (for third year members in Level 3)
- 2316 Poster or display relating to some activity in Unit 3 (for example, homemade insect key, collection of insect wings, spider's web, behavior, life cycle of an insect, insect control, etc).
- 2317 Experimental Project
- 2318 Other

**INDEPENDENT STUDY (Project 6199)**

**Lot No.**

- 2319 Any exhibit relating to your project

**CLASS 24 – SHOOTING SPORTS (PROJECTS 6210 – 6299)**

1. **\*No live ammunition is permitted!!**

**Lot No.**

- 2401 Display about hunter safety
- 2402 First aid kit/survival kit
- 2403 Display about hunting regulations in your area
- 2404 Display showing the parts of a gun/pistol/bow and their purpose
- 2405 Educational display about cleaning a gun, sighting in a gun, types of ammunition
- 2406 Journal of hunting trips and what you did and learned

- 2407 Education display about decoys or make your own decoy
- 2408 Make a shooter's vest
- 2409 Make a shooting block, pellet trap, mousetrap gun, gun case, shooter's mat, gun cabinet, gun stock, or targets/silhouettes
- 2410 Educational display about reconditioning a used gun
- 2411 Educational display about reloading ammunition
- 2412 Educational display about physical fitness for shooters
- 2413 Educational display about proper shooting positions/techniques
- 2414 Educational display about shooter sportsmanship/ethics
- 2415 Educational display about the different kinds and sizes of pistols and/or rifles and the uses of each.
- 2416 Build a tree stand or hunting blind. Make an educational display about it.
- 2417 Display listing your goals and how you accomplished these goals( scrapbook, pictures, or something you made)
- 2418 Any other exhibit pertaining to the activity you are enrolled in (an exhibitor may enter this lot number up to 3 times. However, exhibits must be of a different nature.)

**INDEPENDENT STUDY (Project 6299)**

- 2419 Any exhibit relating to your project

**CLASS 25 – WILDLIFE (PROJECTS 6310 – 6399)**

**Level 1 – Furbearers of Montana, Montana Non-Game Animals, Montana Big-Game Animals, Owls of Montana, Montana's Birds of Prey, Montana's Upland Game Birds, Waterfowl**

**Lot No.**

- 2501 Go with an outdoorsman and observe birds/animals relevant to your project. Make a display/scrapbook showing what you learned on this trip.
- 2502 Journal of your frequent observations of two or more species for at least a month.
- 2503 Make a display that includes scat, tracks, and three food sources for each of two species that you observed.
- 2504 Game/Bird/Animal display of identification
- 2505 Predators and predation
- 2506 Animal track display
- 2507 Animal parts/signs
- 2508 Series of four recipes for preparing and cooking wild game/birds
- 2509 Safe hunting practices
- 2510 Any other exhibit pertaining to the activity you are enrolled in (an exhibitor may enter this lot number up to 3 times. However, exhibits must be of a different nature.)

**Level 2 – Wildlife Habitat Judging, Woodland Wildlife, Outdoor Activities, Water Quality, Find a Big Tree, Wildlife Identification**

**Lot No.**

- 2511 Trapping practices/tanning techniques
- 2512 Habitats
- 2513 Stewardship
- 2514 Waterfowl nesting box
- 2515 Habitat improvement
- 2516 Make a display about water quality and how it affect wildlife
- 2517 Journal of your frequent observations of four or more species for at least a month.



- 2518 Make a display that includes scat, tracks, and three food sources for each of four species that you observed.
- 2519 Economic value of birds/game animals
- 2520 Any other exhibit pertaining to the activity you are enrolled in (an exhibitor may enter this lot number up to 3 times. However, exhibits must be of a different nature.)

**Level 3 – Wildlife Habitat Judging, Outdoor Activities, Water Quality, Woodland Wildlife, Find a Big Tree, Wildlife Identification**

**Lot No.**

- 2521 Write a plan to improve the habitat for a species of game/non-game/bird in your area. Include maps, aerial photos, etc.
- 2522 Improve an area of habitat for a species of game/non-game/bird in your area. Make a display documenting this.
- 2523 Make a display of common wildlife foods for wildlife in your area.
- 2524 Make a display about water quality and how it affects wildlife.
- 2525 Make a display of two or more wildlife management practices and their effect on habitat. Include maps, photos, etc
- 2526 Write a management plan for a species of game/non-game/birds in your area that includes livestock. Include maps, aerial photos, etc.
- 2527 Build a live trap for a non-game animal
- 2528 Journal of your frequent observations of five or more species for at least a month.
- 2529 Make a display that includes scat, tracks, and three food sources for each of five species that you observed.
- 2530 Any other exhibit pertaining to the activity you are enrolled in (an exhibitor may enter this lot number up to 3 times. However, exhibits must be of a different nature.)

**INDEPENDENT STUDY (Project 6399)**

**Lot No.**

- 2531 Any exhibit relating to your project

**CLASS 26 – RANGE SCIENCE MANAGEMENT (Project 6401 – 6499)**

1. Mounting cards for range plants should be lightweight, white, cardboard, or poster board 8 ½” x 11” or 16” x 11”.
2. A three-ring binder is suggested for easy storage and display.
3. Specimens should include roots, stems, leaves, and flowers where possible.

**UNIT 1 (Project 6410)**

**Lot No.**

- 2601 Picture poster showing the stages of succession
- 2602 Poster illustrating the water cycle
- 2603 Educational display related to what you have learned about rangelands
- 2604 Educational display related to what you have learned about the different plants and animals that live on rangelands
- 2605 An educational display showing different uses of rangelands
- 2606 Educational display of the web of life on rangelands

- 2607 Profile of a rancher or other range user
- 2608 Display of a historical time line related to U.S. rangeland uses
- 2609 Any educational display related to what you have learned in this project

**UNIT 2 (Project 6420)**

**Lot No.**

- 2610 Plant collection binder
- 2611 Plant press, including a description of how to collect, press, and mount plant materials properly
- 2612 Plant collection consisting of 5 grasses, 1 grasslike, 3 forbs, and 2 shrubs
- 2613 Educational display describing soil properties and their effect on plant growth
- 2614 Other

**UNIT 3 (Project 6430)**

**Lot No.**

- 2615 Collection of 28 plants (must follow criteria in Unit III, Lesson 1 of the 4-H Range Project Manual)
- 2616 Educational display showing the abundance of various range plants on range in good condition and range in poor condition
- 2617 Other

**UNIT 4 (Project 6440)**

**Lot No.**

- 2618 Exhibit of Range Management Plan including map, identification of problems, solution to problems, and plan
- 2619 Complete binder of Youth Range Manual, Unit 4
- 2620 Other

**UNIT 5 (Project 6450)**

**Lot No.**

- 2621 Enter up to 3 unlike exhibits from your project book
- 2622 Educational display
- 2623 Other

**INDEPENDENT STUDY (Project 6499)**

**Lot No.**

- 2624 Any exhibit relating to your project

**CLASS 27 – SPORT FISHING (Projects 6910 – 6999)**

1. Exhibit no more than 3 items per level

**UNIT 1 – TAKE THE BAIT (Project 6910)**

**Lot No.**

- 2701 Picture poster showing what you have learned about sport fishing.
- 2702 Display of lure and/or flies that you have made
- 2703 An educational display or poster showing different types of fish
- 2704 An educational display or poster showing what you learned about fishing or angling
- 2705 Display of your fishing log or casting record

- 2706 Display of common fishing tackle equipment
- 2707 Display of basic fishing knots
- 2708 Display of 3 rigging systems
- 2709 Any other educational display/project related to what you learned in this project (an exhibitor may enter this lot number up to 3 times. However, exhibits must be of a different nature.)

**UNIT 2 – REEL IN THE FUN (Project 6920)**

**Lot No.**

- 2710 An educational display comparing the different types of casting techniques
- 2711 Display of lures and/or flies that you made.
- 2712 Display of your fishing log or casting record
- 2713 An educational display identifying the different parts of a fish
- 2714 An educational display of your favorite fish recipes
- 2715 Exhibit of your own hand-made fishing wallet
- 2716 Display of at least six intermediate fishing knots (for example, trilene, surgeon’s, uni-knot, world’s fair know, two-fold open and blood knot).
- 2717 An educational display related to what you learned about different types of fish
- 2718 Any other educational display/project related to what you learned in this project (an exhibitor may enter this lot number up to 3 times. However, exhibits must be of a different nature.)

**UNIT 3 – CAST INTO THE FUTURE (Project 6930)**

**Lot No.**

- 2719 An educational display showing how you introduced a friend to fishing.
- 2720 An educational display showing the four different types of reels.
- 2721 Display of lures and/or flies that you made.
- 2722 An educational display of the different sizes and types of hooks
- 2723 An educational display showing at least 8 kinds of aquatic insects.
- 2724 An educational display about fish habitats.
- 2725 An educational display about fishing ethics.
- 2726 A display of your fishing journal.
- 2727 An educational display about the different kinds of fish found in Montana.
- 2728 Any other educational display/project related to what you learned in this project (an exhibitor may enter this lot number up to 3 times. However, exhibits must be of a different nature.)

**INDEPENDENT STUDY (Project 6999)**

**Lot No.**

- 2729 Any exhibit relating to your project

**CLASS 28 – OUTDOOR ADVENTURES (Project 6510-6599)**

**UNIT 1 - HIKING THE TRAILS (Project 6510)**

**Lot No.**

- 2801 Backpack containing essential items for a day hike.
- 2802 First aid kit you made for a day hike.
- 2803 Display relating to “Leave No Trace “
- 2804 Educational display relating to project

## **UNIT 2 - CAMPING ADVENTURES (Project 6520)**

### **Lot No.**

- 2805 Display of knots you tied for camping  
2806 3-day camping menu, necessary equipment, method of preparation and clean up  
2807 Educational display relating to project

## **UNIT 3- BACKPACKING EXPEDITIONS (Project 6530)**

### **Lot No.**

- 2808 3-day backpacking menu, necessary equipment, method of preparation and clean up  
2809 First aid kit you made for backpacking trip  
2810 Display relating to "Leave No Trace" in a variety of environments  
2811 Educational display relating to this project

## **INDEPENDENT STUDY (Project 6599)**

### **CLASS 29 – WIND ENERGY (Projects 6610 – 6699)**

### **Lot No.**

- 2901 Any display relating to this project, up to 3 unlike items

## **COMMUNICATION ARTS & LEISURE SCIENCES – DEPARTMENT E**

### **CLASS 30 PHOTOGRAPHY (PROJECT 7010-7060)**

1. A member may exhibit up to 6 lots.
2. Pictures must be taken during the current 4-H year & must be taken by the exhibitor.
3. Pictures may have captions, expressions, titles, etc.
4. Pictures may be color or black and white.
5. Pictures may be digital format.
6. Exhibits should be mounted, displayed or arranged according to each project manual unit guidelines.

## **LEVEL 1 – FOCUS ON PHOTOGRAPHY (Project 7010)**

### **Lot No.**

- 3001 Six pictures displaying "right and wrong" ways to use your camera  
3002 Four picture display showing the effects of changing light  
3003 Display two photos of shadow shapes  
3004 Display your best pictures of front, side, back and top lighting  
3005 Show three of your best flash pictures (no red eyes)  
3006 Show your favorite landscape or portrait photo  
3007 Display three photos using a long shot, a medium shot and a close-up shot  
3008 Display three of your best uncluttered pictures (composition)  
3009 Four picture display showing stomach level, back level, lean over level, and sideways level  
3010 Favorite special effect photo  
3011 Display showing your best photo from each category: places, people, and animals  
3012 Mounted photo story (5 – 10 pictures)  
3013 Display 3 – 5 favorite black and white photos

- 3014 Display 4 photos with completed photo scorecards for each
- 3015 Educational display
- 3016 Display your favorite picture framed for display
- 3017 Negative file
- 3018 Photo album
- 3019 Pin hole camera
- 3020 Other, up to 3 unlike items

**LEVEL 2 – CONTROLLING THE IMAGE (Project 7020)**

**Lot No.**

- 3021 Display showing three photos with different aperture and 3 photos with different shutter speeds
- 3022 Display three photos of same subject with different apertures
- 3023 Four photos showing different lighting
- 3024 Display showing one photo with hard light and one photo with soft light
- 3025 Display your three favorite silhouettes
- 3026 Display your favorite flash photos
- 3027 Display a photo using the Rule of Thirds, one using the Golden Triangle and one using the Golden Rectangle
- 3028 Display a series of three to five photos that represent different viewpoints of one subject
- 3029 Display a photo that shows good use of positive and negative space
- 3030 Create a candid collection of four of your best photos
- 3031 Display with best photo with a shutter speed of 1/250 and a photo with a 1/30 shutter speed
- 3032 Display showing examples of panning and blurring motion
- 3033 Display six pictures of Bits and Pieces
- 3034 Create a panorama using three images and displayed as one
- 3035 Display your favorite photo
- 3036 Other, up to 3 unlike items

**LEVEL 3 – MASTERING PHOTOGRAPHY (Project 7030)**

**Lot No.**

- 3037 Display your favorite wide angle and favorite telephoto pictures
- 3038 Display three unusual effects using filters
- 3039 Display three photos taken in bright light using a light meter
- 3040 Display two dramatic photos taken by adding light to your scenes and two photos without flash by using natural light
- 3041 Display two reflection photos
- 3042 Display four composition photos using different viewpoints and lines
- 3043 Display four composition photos that break the rules
- 3044 Display three still life photos showing different arrangements and techniques
- 3045 Display two formal and two informal portraits
- 3046 Display four photos, one from each element of composition; symmetry or asymmetry; pattern or texture; shape or form; visual rhythms
- 3047 Display three photos that illustrate monochromatic, contrasting and complementary color techniques
- 3048 Display three to five photos that highlight details
- 3049 Display a photo brochure
- 3050 Display some photos taken with advanced or specialized equipment
- 3051 Display your favorite photo

#### **LEVEL 4 – MAKING VIDEOS AND MOVIES (Project 7040)**

##### **Lot No.**

- 3052 A movie one minute or longer in length
- 3053 A video one minute or longer in length
- 3054 Educational display
- 3055 Movie planning cards
- 3056 Notebook
- 3057 Other exhibit, up to 3 unlike items

#### **LEVEL 5 - PRODUCING A SLIDE SHOW (PROJECT 7050)**

##### **Lot No.**

- 3058 Original slide show
- 3059 Exhibit a story board showing the slide show production
- 3060 A title slide
- 3061 Produce a power point presentation one minute or longer in length
- 3062 Other exhibit

#### **LEVEL 6 - DARK ROOM TECHNIQUES (Project 7060)**

1. Negatives and pictures must be developed by the member.

##### **Lot No.**

- 3063 A print exhibit of 3 – 5 photos taken and developed by exhibitor
- 3064 One enlargement from a negative taken, developed and cropped by the exhibitor. Negative to accompany print.
- 3065 Other exhibit, up to 3 unlike items

#### **INDEPENDENT STUDY (Project 7099)**

##### **Lot No.**

- 3066 Portraits
- 3067 Career Study
- 3068 Computer Enhanced Photographs
- 3069 Any other exhibit relating to your project

#### **CLASS 31 LEATHERCRAFT (Project 7105-7140)**

#### **UNIT 1 (Project 7105)**

No swivel knife is allowed in Unit 1. The lacing must be with either a whip stitch or a running stitch.

##### **Lot No.**

- 3101 Luggage Tag
- 3102 Bookmark
- 3103 Coaster
- 3104 Coin Purse
- 3105 Comb Case
- 3106 Key Case/Key Fob
- 3107 Knife Sheath
- 3108 Any other exhibit pertaining to this unit (an exhibitor may enter this lot number up to 3 times. However, exhibits must be of a different nature.)

**UNIT 2 (Project 7110)**

Unit 2 allows for the use of a swivel knife. At least one exhibit should have double loop lacing.

**Lot No.**

- 3109 Rifle Sling
- 3110 Billfold
- 3111 Checkbook Cover
- 3112 Eyeglass case
- 3113 ID or Picture Wallet
- 3114 Key Case
- 3115 Knife Sheath
- 3116 Pocket Saver
- 3117 Small Purse
- 3118 Swivel Knife Sheath
- 3119 Any other exhibit pertaining to the activity you are enrolled in (an exhibitor may enter this lot number up to 3 times. However, exhibits must be of a different nature.)

**UNIT 3 (Project 7115)**

Unit 3 is projects using beginning dye, inverted carving, and alphabet/stamping tools

**Lot No.**

- 3120 Camp Stool
- 3121 Belt
- 3122 Holster
- 3123 Book covers
- 3124 Notebook
- 3125 Purse
- 3126 Quiver/Arm Guard
- 3127 Travel/Toiletry Bag
- 3128 Wallet
- 3129 Any other exhibit pertaining to the activity you are enrolled in (an exhibitor may enter this lot number up to 3 times. However, exhibits must be of a different nature.)

**UNIT 4 (Project 7120)**

Unit 4 includes projects that have figure carving, embossing, and filigree

**Lot No.**

- 3130 Leather Unit 4 Exhibit 1
- 3131 Leather Unit 4 Exhibit 2
- 3132 Leather Unit 4 Exhibit 3
- 3133 Leather Unit 4 Exhibit 4
- 3134 Leather Unit 4 Exhibit 5

**UNIT 5 (Project 7125)**

Unit 5 includes projects that have coloring and shading. NO mounted or framed pictures are allowed.

**Lot No.**

- 3135 Leather Unit 5 Exhibit 1
- 3136 Leather Unit 5 Exhibit 2
- 3137 Leather Unit 5 Exhibit 3
- 3138 Leather Unit 5 Exhibit 4
- 3139 Leather Unit 5 Exhibit 5

**UNIT 6 (Project 7130)**

Unit 6 includes projects that have pictorial carving (portrait or scene pictures).

**Lot No.**

3140	Leather Unit 6 Exhibit 1
3141	Leather Unit 6 Exhibit 2
3142	Leather Unit 6 Exhibit 3
3143	Leather Unit 6 Exhibit 4
3144	Leather Unit 6 Exhibit 5

**UNIT 7 - MAKING OR REBUILDING SADDLES (Project 7135)****Lot No.**

3145	Exhibit 1
3146	Exhibit 2
3147	Exhibit 3
3148	Exhibit 4
3149	Exhibit 5

**ADVANCED LEATHERCRAFT (Project 7140)**

**UNIT 8** - Develop a pattern using stamping tools, create balance in design and color, and apply color to a stamped design.

**Lot No.**

3150	Exhibit 1
3151	Exhibit 2
3152	Exhibit 3
3153	Exhibit 4
3154	Exhibit 5

**UNIT 9** – Non-tooled projects – Make articles using non-tooled and non-sewn techniques (lacing, braiding, expanding, sculpting, etc.).

**Lot No.**

3155	Exhibit 1
3156	Exhibit 2
3157	Exhibit 3
3158	Exhibit 4
3159	Exhibit 5

**UNIT 10** – Leather Construction – Learn about selecting patterns for leather construction; selecting leather and construction techniques.

**Lot No.**

3160	Exhibit 1
3161	Exhibit 2
3162	Exhibit 3
3163	Exhibit 4
3164	Exhibit 5



## **INDEPENDENT STUDY (Project 7199)**

### **Lot No**

3165	Exhibit 1
3166	Exhibit 2
3167	Exhibit 3
3168	Exhibit 4
3169	Exhibit 5

## **CLASS 32 - EXPLORING 4-H (Project 7210)**

### **DISCOVERING 4-H (Project 7210)**

Enter unlike exhibits or posters showing results of what was learned.

### **Lot No.**

3201	Poster or display about Montana or agriculture in Montana
3202	Poster or display about family and you (may include family, fun, safety, food, clothing, etc)
3203	A button sewn on fabric
3204	A sandwich or snack
3205	Poster or display on things that make your world work
3206	Poster or display on plants and soil including a soil garden of clay, silt, and sand
3207	Poster or display on nature including insects, birds, and wildlife
3208	Poster or display on any activity included in project manual, up to 3
3209	Other educational exhibit/poster related to this project (An exhibitor may enter this lot number up to 3 times. However, exhibits must be of a different nature.)

## **CLASS 33 - SELF DETERMINED (Project 7300)**

1. Exhibitor must have filed a project plan with Extension Office before exhibiting at the fair.
2. Each exhibit must include the goals of your project and how you evaluated the self determined project.
3. Enter unlike exhibits, display, item made or picture story etc.

### **Lot No.**

3301	Exhibit poster or notebook – include project plan stating goals and up-to-date record of project showing procedures and progress. Points on exhibit will be awarded in relation to complexity of project.
3302	Other (an exhibitor may enter this lot number up to 3 times. However, exhibits must be of a different nature.)

## **CLASS 34 - COWBOY POETRY (Project 7400)**

1. There is only one level in this project and it is self-paced.
2. Lot number 3401 is required.

### **Lot No.**

3401	Exhibit any 3 original poems consisting of at least one four-line stanza written by you during the current year.
3402	Poster showing what you have learned about cowboy poetry.
3403	An educational display related to what you have learned about rhyme schemes or meter.

- 3404 An educational display about some of the classic cowboy poets
- 3405 An educational display about Western culture or history, especially about your local area.
- 3406 Display of examples of cowboy poetry you have found in your local library.
- 3407 A photo story of your participation in a cowboy poetry gathering.
- 3408 A photo story showing you teaching others to write and recite their own poetry.
- 3409 Any educational display related to what you have learned in this project

## **VOLUNTEERISM & LEADERSHIP DEPARTMENT F**

### **CLASS 35 – 4-H CENTENNIAL PROJECT (Project 7230)**

**Lot No.**

- 3501 Display relating to project
- 3502 Display relating to project

### **CLASS 36 - TEEN LEADERSHIP (Project 8010)**

**Lot No.**

- 3601 Notebook describing your leadership project
- 3602 Display or poster highlighting an area of your leadership project
- 3603 Video, slides, or photo album pertaining to the leadership project
- 3604 Educational display relating to the project

## **HEALTH AND HUMAN DEVELOPMENT – DEPARTMENT G**

### **CLASS 37 - CHILD DEVELOPMENT (Projects 1010 - 1099)**

1. Your exhibit should explain the relationship of health, safety, care, play or growth to babysitting or child development. This would accompany the kit or be the subject of the poster or scrapbook.

#### **LEVEL 1 GROWING ON MY OWN (Project 1010)**

**Lot No.**

- 3701 Picture poster of pre-school activities you developed or used
- 3702 Notebook of child observations
- 3703 Poster or collage showing the lives of 2 children
- 3704 Photo story or collage showing human growth and development of one person
- 3705 Educational display relating to what you learned in this project
- 3706 Poster of photographs of yourself at different stages of life
- 3707 Story masks that you made
- 3708 Display of “hazard hunt” or “safety rules” that you developed
- 3709 Other

#### **LEVEL 2 GROWING WITH OTHERS (Project 1020)**

**Lot No.**

- 3710 Poster display of the Home Alone game
- 3711 Educational display of “A Plan for When I’m by Myself”

3712	Notebook of child observations
3713	educational poster of age appropriate toys
3714	Safety exhibit on toys that can be dangerous for children
3715	Friendship kite that you made
3716	Poster display illustrating the lives of 2 children
3717	Poster display of your own family genealogy and symbols
3718	Any educational display related to what you learned in the project
3719	Other

**LEVEL 3 GROWING IN COMMUNITIES (Project 1030)**

**Lot No.**

3720	Display of a “quiz board” or “career cards” that you developed to teach about child development and careers
3721	Notebook of child observations
3722	Notebook of your own “how to” guide for child care providers with photos
3723	Educational display analyzing television programs and commercials aimed at children
3724	Notebook of your own inventory of your community’s disability accessibility
3725	Poster display of 5 families who live in your community today
3726	Poster display of 10 families who lived in your community 100 years ago
3727	Educational display of a community service activity you developed to work with senior citizens
3728	Notebook or display of your interviews with at least 10 people
3729	Any educational display related to what you learned in this project
3730	Other

**INDEPENDENT STUDY (Project 1099)**

**Lot No.**

3731	Any exhibit relating to your project
------	--------------------------------------

**CLASS 38 – SEWING AND TEXTILES (Projects 1110 – 1199)**

1. Exhibits will be judged on quality of construction, quality of workmanship, appearance and functionality. For original designs, include your pattern design.
2. All garments must be the work of the 4-Grader during the current year.
3. Sweaters used with clothing project may be made in knitting project and will receive its ribbon for workmanship in the knitting division. Sweater may be entered in both classes.

**LEVEL 1 SEW AND HAVE FUN (Project 1110)**

**Lot No.**

3801	Sewing kit
3802	A nine square pillow
3803	Pullover top
3804	Elastic shorts
3805	Simple jumper
3806	Simple skirt
3807	A simple costume
3808	Simple tote bag, lunch bag or book bag
3809	A item of clothing that you have “recycled” into something new

- 3810 Simple stuffed toy
- 3811 Pot holders
- 3812 2 placemats
- 3813 2 napkins
- 3814 Apron
- 3815 Vest
- 3816 An exhibit or poster display of equipment, parts of a sewing machine, cost comparison poster, how to read a pattern, laundry poster, poster of serger threads, or other related learnings from Level 1.
- 3817 An educational display related to some activity in Level 1 (such as types of fabrics)
- 3818 Any other item of your choice (an exhibitor may enter this lot number up to 3 times. However, exhibits must be of a different nature.)

**LEVEL 2 SEW MUCH MORE (Project 1120)**

**Lot No.**

- 3819 Display of the results of tests on various fabrics
- 3820 A zippered pencil case
- 3821 A crazy tote bag
- 3822 Ice cream cone sampler
- 3823 Any original design item
- 3824 Any item made from a pattern
- 3825 A item of clothing that you have “recycled” into something new
- 3826 An exhibit or poster display of equipment, cost comparison poster, how to read a pattern, laundry poster, poster of serger threads, or other related learnings from Level 2
- 3827 An educational display related to some activity in Level 2 (such as types of fabrics)
- 3828 Any other item of your choice (an exhibitor may enter this lot number up to 3 times. However, exhibits must be of a different nature.)

**LEVEL 3 SEW ON AND SEW FORTH (Project 1130)**

**Lot No.**

- 3829 Decorative serger sampler
- 3830 A pair of wool mittens
- 3831 An item of clothing that you have “recycled” into something new
- 3832 Display of results from dyeing fabric
- 3833 A cape
- 3834 A backpack
- 3835 A duffle bag
- 3836 A fanny pack
- 3837 A ski or snowboard bag
- 3838 Any item made from polar fleece
- 3839 Any original design item
- 3840 Any item made from a pattern
- 3841 An exhibit or poster display of equipment, cost comparison poster, how to read a pattern, laundry poster, poster of serger threads, or other related learnings from Level 3
- 3842 An educational display related to some activity in Level 3
- 3843 Any other item of your choice (an exhibitor may enter this lot number up to 3 times. However, exhibits must be of a different nature.)

## KNITTING (Project 1150)

### Beginning

#### Lot No.

3844	Pair of potholders	3851	Knit top on kitchen towel
3845	Two needle mittens	3852	Doll clothes
3846	Ear warmer or ski band	3853	Neck Scarf
3847	Slippers	3854	Other (an exhibitor may enter this lot number up to 3 times. However, exhibits must be of a different nature.)
3848	Hat or Cap		
3849	Two needle sport ankle		
3850	Pillow		

### Intermediate

#### Lot No.

3855	Item using cable stitch	3862	Sweater with raglan sleeves
3856	Item using moss or seed stitch	3863	doll clothes (3 pieces)
3857	Item with buttonholes	3864	Baby afghan
3858	Slippers	3865	Vest
3859	Novelties (stuffed toy, etc)	3866	Other (an exhibitor may enter this lot number up to 3 times. However, exhibits must be of a different nature.)
3860	Socks – 2 colors		
3861	Mittens – 2 colors		

### Advanced

#### Lot No.

3867	Afghan	3871	Socks or cap using four needles
3868	Sweater set (pullover & cardigan)	3872	Other (an exhibitor may enter this lot number up to 3 times. However, exhibits must be of a different nature.)
3869	Coat sweater with design		
3870	Article using circular needles (skirt, sweater, etc)		

### Machine Knitting

#### Lot No.

3873	Scarf	3877	Other (an exhibitor may enter this lot number up to 3 times. However, exhibits must be of a different nature.)
3874	Hat		
3875	Vest		
3876	Sweater		

## CROCHET (Project 1160)

### Beginning/Intermediate

#### Lot No.

3878	Set of two potholders
3879	Simple vest
3880	Hat or cap
3881	Scarf
3882	Pair of slippers
3883	Pillow top
3884	Cape or poncho
3885	Drawstring bag or belt
3886	Doll clothes

- 3887 Crocheted top on kitchen towel
- 3888 Novelties (stuffed toy, etc)
- 3889 Baby afghan
- 3890 Other, up to 3 unlike items

**Advanced**

**Lot No.**

- |                               |  |
|-------------------------------|--|
| 3891 Poncho or cape           | 3897 Table runner                            |
| 3892 Afghan                   | 3898 Tablecloth                              |
| 3893 Sweater                  | 3899 Bedspread                               |
| 3894 vest                     | 3900 Other (an exhibitor may enter this lot  |
| 3895 Purse or bag with zipper | number up to 3 times. However, exhibits must |
| 3896 Doily                    | be of a different nature.)                   |

**EMBROIDERY (Project 1170)**

**Beginning/Intermediate**

**Lot No.**

- |   |  |
|---|--|
| 3901 Potholder                                | 3912 Counted cross stitch novelty item       |
| 3902 Pin cushion                              | 3913 Crewel embroidery item                  |
| 3903 Sampler                                  | 3914 Needlepoint picture                     |
| 3904 Pillow top                               | 3915 Needlepoint novelty item                |
| 3905 Small picture                            | 3916 Needlepoint constructed item            |
| 3906 Article using cross stitch               | 3917 Other (an exhibitor may enter this lot  |
| 3907 Simple design on scarf, towel, clothing  | number up to 3 times. However, exhibits must |
| item, or any other article                    | be of a different nature.)                   |
| 3908 Counted cross stitch bookmark            |  |
| 3909 Counted cross stitch simple picture ( in |  |
| hoop or frame)                                |  |
| 3910 Counted cross stitch tree ornament       |  |
| 3911 Counted cross stitch pin cushion         |  |

**Advanced**

**Lot No.**

- |  |  |
|--|--|
| 3918 Purse or belt                           | 3926 Counted cross stitch using waste canvas |
| 3919 Set of 4 placemats                      | 3927 Counted cross stitch novelty item       |
| 3920 Set of 4 towels                         | 3928 Crewel embroidery item                  |
| 3921 Set of pictures                         | 3929 Needlepoint picture                     |
| 3922 Wall hanging                            | 3930 Needlepoint novelty item                |
| 3923 Smocking on clothing time               | 3931 Needlepoint constructed item            |
| 3924 Design on clothing item or any other    | 3932 Other (an exhibitor may enter this lot  |
| article                                      | number up to 3 times. However, exhibits must |
| 3925 Counted cross stitch picture in hoop or | be of a different nature.)                   |
| frame  |  |

**QUILTING/PATCHWORK/APPLIQUE (Project 1180)**

**Lot No**

- |                                 |                                    |
|---------------------------------|------------------------------------|
| 3933 Appliqué on a garment      | 3935 Appliquéd pillow top          |
| 3934 Appliqué on a wall hanging | 3936 Appliquéd item of your choice |

3937	Quilt using appliqué		patchwork fabric
3938	Quilted strip vest	3945	Quilt using patchwork
3939	Quilted garment	3946	Item combining of patchwork & appliqué
3940	Quilted wallhanging	3947	Patchwork item of your choice
3941	Quilted pillow top	3948	Other (an exhibitor may enter this lot number up to 3 times. However, exhibits must be of a different nature.)
3942	Tied quilt		
3943	Quilted item of your choice		
3944	Garment or article made from handmade		

**INDEPENDENT STUDY (Project 1199)**

**Lot No.**

3949 Any exhibit relating to your project

**CLASS 40 – FOODS & NUTRITION (Projects 1418 – 1499)**

1. Exhibitors may enter items in 6 lots in the unit in which they are enrolled but only 1 item per lot unless lot description allows multiple items.
2. All foods, except decorated cakes and candy, should be exhibited on 8-inch plates under a clear plastic cover. (Ziploc bags are preferred).
3. Four uniform items are recommended unless otherwise designated.
4. Definitely NO MIXES allowed, except where recipes suggest.
5. ***Recipes must be attached to your food exhibits.***
6. All posters are to be 14” x 22”.

**4-H COOKING 101 (Project 1418)**

**Lot No.**

4001	Poster on food safety	4005	Any item from recipes included in project manual, up to 3. Include recipe with finished item.
4002	Display of measuring tools		
4003	Display using the food pyramid		
4004	Display of basic cooking equipment	4006	Other (relating to project), up to 3

**4-H COOKING 201 (Project 1419)**

**Lot No.**

4007	Display of cooking “how to” basics	4012	Recipe and finished item from dairy group
4008	Display of food and kitchen safety		
4009	Recipe and finished item from fruit/veg group	4013	Recipe and finished item from desserts
		4014	Any other item from recipes in project manual, up to 3. Include recipe with finished item.
4010	Recipe and finished item from grain		
4011	Recipe and finished item from meat/beans group	4015	Other (relating to project), up to 3

**4-H COOKING 301 (Project 1420)**

**Lot No.**

4016	Display of baking “how to” basics		group
4017	Display/plan for hosting a party	4019	Recipe and finished item from grain
4018	Recipe and finished item from fruit/veg	4020	Recipe and finished item from

	meat/beans group	4023	Any other item from recipes in project manual, up to 3. Include recipe with finished item.
4021	Recipe and finished item from dairy group		
4022	Recipe and finished item from desserts	4024	Other (relating to project), up to 3

**UP FOR THE CHALLENGE, LIFETIME FITNESS (Project 1415)**

**Lot No.**

4025	Homemade yogurt, 1 cup	4030	Plate of dairy food hors d'oeuvres or cheese tray for party
4026	File or notebook with ten aerobic activities and instructions	4031	Product using non-fat dry milk
4027	Four apple cinnamon muffins	4032	Poster showing differences between butter and margarine
4028	Exhibit or poster showing cheese or milk varieties	4034	Other (an exhibitor may enter this lot number up to 3 times. However, exhibits must be of a different nature.)
4029	Poster showing how to calculate target-age-adjusted heart rate		

**PARTY PLANNER (Project 1421)**

**Lot No.**

4033	Centerpiece with party plan & menu	4042	Poster, notebook, display on party, which will include preparation, entertainment, serving, menu, shopping list, number of people served, costs, time chart, equipment needed
4034	Hero sandwich	4043	Reference file of entertaining ideas (recipes, menu, decorations, entertainment, etc)
4035	Plate of 4 rolled and filled cookies	4044	Other (an exhibitor may enter this lot number up to 3 times. However, exhibits must be of a different nature.)
4036	1 dozen party cookies arranged on a plate (2 kinds, 2 shapes)		
4037	Sample or display of food items that could be used as gifts		
4038	Relish tray		
4039	3 different types of nutritious snacks		
4040	1 loaf of fancy yeast bread		
4041	Fruit salad for one using 5 ingredients		

**INDEPENDENT STUDY (Project 1499)**

**Lot No.**

4132	Any exhibit relating to your project
------	--------------------------------------

**FOOD PRESERVATION**

**ANYONE ENROLLED IN A FOODS PROJECT MAY ENTER THIS CLASS**

1. Use only standard clear glass canning jars.
2. Unless otherwise stated, entries must be processed in either pint or quart jars. The use of half gallon jars will be disqualified.
3. Each jar must be clearly labeled. They should be typewritten or plainly printed with the name of the food in jar, date canned, processing time and method of preservation.
4. All jars must be sealed
5. Jelly will not be judged unless standard jelly jars are used. Jelly must be processed in standard jars.
6. Non-acidic vegetables and meats must be pressure canned.



## **Beginning Food Preservation**

### **Lot No.**

4133	One jar freezer jam or jelly	4137	1 jar canned fruit
4134	1 jar fruit jam	4138	1 jar canned berries
4135	1 jar fruit preserves, conserves, marmalade or fruit butter	4139	1 jar canned vegetables
4136	1 jar jelly	4140	1 jar canned pickles
		4141	Other – 1 jar

## **Advanced Food Preservation**

### **Lot No.**

4142	3 jars freezer jam or jelly, different kinds	4151	3 rolls different fruit leather
4143	3 jars fruit jam, different kinds	4152	Plate, 3 different dried fruit
4144	3 jars fruit preserves, conserves, marmalades or fruit butters	4153	Plate, 3 different dried vegetables
4145	3 jars jelly, different kinds	4154	1 jar sauerkraut
4146	3 jars canned fruit, different kinds	4155	1 plate jerky
4147	3 jars canned berries, different kinds	4156	1 pint relish
4148	3 jars canned vegetables, different kinds	4157	1 pint canned fish or meat
4149	3 jars canned pickles, different kinds	4158	Educational display
4150	Gift pack of canned products	4159	Notebook
		4160	Other

## **BAKING 101-104**

### **Lot No.**

4161	Baking Educational Display
4162	Baking Notebook/Personal Recipe Book
4163	Baked item from manual, up to 3
4164	Baked item from your own recipe, up to 3
4165	Any other baking exhibit

## **CLASS 41 – CAKE DECORATING (Foods & Nutrition) (County Project 0161)**

### **UNIT 1 CAKE DECORATING**

#### **Lot No.**

4166	Display of cake decorating materials
4167	Photo display of cakes you have made and decorated with complete descriptions.
4168	Display of different decorating techniques
4169	Finished decorating project (cupcakes, cake, etc.), up to 3 unlike items
4170	Any other exhibit

## **CLASS 42 HOME ENVIRONMENT (PROJECTS 1510 – 1599)**

### **DESIGNING MY SPACE**

#### **Lot No.**

A notebook, poster, or display of the following:

4201	An accessory item	4203	Design plan (furniture, room, or home)
4202	Floor plan of a room	4204	Architectural drawing symbols

4205	Bedsread – designed and made		or plumbing, etc for a home
4206	Layout of electric system, sound system,	4207	Any other item related to design

## SETTING THE STAGE

<u>Lot No.</u>			
4208	Photo story of an activity showing process of construction, doing, etc	4213	storage in your home
4209	Small structure you have built	4214	Window treatment
4210	Piece of furniture you have sanded and finished	4215	Color scheme or study of color
4211	Item you have refinished	4216	Light or Lighting display
4212	Something you have done to improve	4217	Item you have woven, braided or spun
			Any other item from this activity area

## IT'S MADE FROM WHAT?

<u>Lot No.</u>			
4218	Arrangement	4225	Stitchery project for home use
4219	Homemade paper	4226	Accessory item you have made
4220	Container	4227	Drawing, sketch or design
4221	Wall hanging, picture, or other items to hang on the wall	4228	Piece of furniture you have designed, constructed and finished
4222	Free standing or hanging item	4229	Display or exhibit of natural dyes
4223	Furniture with cane, grass or rushweaving	4230	Any other item related to this activity area
4224	Towel and washcloth set you have made or decorated		

## IT COULD LAST FOREVER

<u>Lot No.</u>			
4231	Something old you have renovated for your home	4238	Exhibit tracing development and use of
4232	Quilt	4239	Picture frame or mat
4233	Chair pad	4240	Photo display of old home
4234	History of family heirloom	4241	Glass or glassware study
4235	History of a piece of furniture	4242	Photo story of activity
4236	Preservation of material used in home	4243	Notebook showing comparison, study
4237	Housing study	4244	Any other item related to this activity

## LET'S GO SHOPPING

<u>Lot No.</u>			
4245	Price comparison for wall paper, paint or paneling	4250	Comparison of four lights or lamps
4246	Paper or display on buying an item for your home (for example appliance, tools, linens, etc)	4251	Display of small household appliances
4247	Comparison of three types of cookware or flatware	4252	Comparison study of larger home appliances
4248	Comparison of three types of window glass	4253	Comparison study of countertops or tiles
4249	Comparison of four items used in constructing, finishing, or furnishing a home	4254	Comparison study of floor coverings
		4255	Display/Poster/Notebook showing selection process on a budget
		4256	Any other item related to this project area

**INDEPENDENT STUDY (Project 1599)**

**Lot No.**

4257 Any exhibit relating to your project

**CLASS 43 – FAMILY LIFE (Projects 1310 – 1399)**

**UNIT 1 – FAMILY ADVENTURES (Project 1310)**

**Lot No.**

4301 Poster or notebook of your family tree  
4302 Recipe file of your family's favorite recipes  
4303 Poster or notebook describing your family's fire escape route or energy conservation plan  
4304 Photo story with at least 5 pictures or photo story of your family vacation/getaway  
4305 Other, up to 3 unlike items  
4306 Any display from the 14 family activities in project manual, up to 3

**INDEPENDENT STUDY (Project 1399)**

**Lot No.**

4307 Any exhibit relating to your project

**CLASS 44 – BABYSITTING (Projects 1040-1099)**

**Lot No.**

4401 Any display from one of the five chapter lessons in member guide  
4402 Other, up to 3 unlike items

**CLASS 45 – THEATRE ARTS (Projects 0763-0799)**

**Lot No.**

4501 Any display from Play the Role! Acting, Level 1  
4502 Any display from Become a Puppeteer, Level 2  
4503 Any display from Set the Stage, Level 3  
4504 Other, up to 3 unlike items

**COUNTY PROJECTS DEPARTMENT H**

**CLASS 50 – ARTS & CRAFTS & SCRAPBOOKING, VISUAL ARTS (Projects 0771-0782, 5101)**

1. Exhibits will be judged on quality of work, merit of the individual piece, and creativity, as well as interview performance.
2. Project goals and how goals were accomplished must be written on a 3½ x 5 card and accompany the project.
3. Exhibitors may enter items in 6 lots in the class in which they are enrolled but only 1 item per lot unless lot description allows multiple items.

**ARTS (Project 0771)****DRAWING (PEN, PENCIL, CHARCOAL, FELT-TIP, ETC)****Lot No.**

5001	Drawing	5006	Still Life
5002	Animal	5007	Abstract
5003	Portrait	5008	Other exhibit (an exhibitor may enter this lot number up to 3 times. However, exhibits must be of a different nature.)
5004	Landscape		
5005	Seascape		

**WATERCOLOR PAINTING****Lot No.**

5009	Watercolor Painting	5014	Abstract
5010	Animal	5015	Other exhibit (an exhibitor may enter this lot number up to 3 times. However, exhibits must be of a different nature.)
5011	Landscape		
5012	Seascape		
5013	Still Life		

**OIL OR ACRYLIC****Lot No.**

5016	Oil or Acrylic	5021	Still Life
5017	Animal	5022	Abstract
5018	Portrait	5023	Other exhibit (an exhibitor may enter this lot number up to 3 times. However, exhibits must be of a different nature.)
5019	Landscape		
5020	Seascape		

**3-D ARTWORK****Lot No.**

5024	Sculpture	5029	Plastic/Resin
5025	Carving	5030	Other exhibit (an exhibitor may enter this lot number up to 3 times. However, exhibits must be of a different nature.)
5026	Paper Mache		
5027	Metal Design		
5028	Collages		

**CRAFTS (Project 0771)****Lot No.**

5031	Macramé/Weaving	5040	Wooden kit
5032	Fabric Painting	5041	Dry or Silk Flower arrangements
5033	Beadwork	5042	Dolls
5034	Needlepoint	5043	Tie Dye
5035	Stuffed Animals	5044	Stained Glass
5036	Birdhouse	5045	Any other Craft exhibit (an exhibitor may enter this lot number up to 3 times. However, exhibits must be of a different nature.)
5037	Weaving		
5038	Woodcarving		
5039	Wreaths		

**CERAMICS****Lot No – Underglaze**

5046	Translucent	5047	Opaque
------	-------------	------	--------

5048	Hand painted or original	5050	Air brush
5049	Special technique	5051	Ceramics underglaze, other

**Lot No. – Overglaze**

5052	Metallic – gold, silver, bronze, copper	5054	Hand painted or original
5053	Luster, Mother of Pearl or any other luster	5055	Decals
		5056	Ceramics overglaze, other

**Lot No. – Glaze**

5057	Decorated with one glaze	5060	Hand painted or original
5058	Two or more glazes in combination	5061	Ceramics glaze, other
5059	Two or more glazes – controlled		

**Lot No. – Decorated Items**

5062	Piecework – cutouts, raised cutouts, relief	5065	Hand painted or original
5063	Graffito	5066	Ceramics decorated, other
5064	Clay lift		

**Lot No – Stains**

5067	Translucent	5072	Glaze and stain combination
5068	Opaque	5073	Special technique
5069	Pearl	5074	Opaque-translucent combination
5070	Metallic	5075	Air brush stain
5071	Hand painted or original	5076	Other

**SCRAPBOOKING/STAMPING (Project 0780-0782)**

**Lot No.**

5077	Any exhibit, up to 3 items of unlike nature.	5080	Stamping tools/supply kit
5078	Scrapbook tools and supply kit	5081	Set of 3 stamped cards
5079	Memory Book/Photo Album		

**COUNTY PROJECTS DEPARTMENT H**

**CLASS 51 – FARM SAFETY (Projects 5101-5102)**

**Lot No.**

5101	Demonstrate knowledge of parts use and function of a variety of farm equipment.
5102	Demonstrate ability to operate farm equipment. (5101 must be completed before 5102)

**CLASS 52 – WELDING (Projects 5201)**

5201	Welding tool identification/display
5202	Display/demonstration on welding safety
5203	Display/demonstration of different types of welding &/or welds
5204	Any display based on the 4-H welding manual (up to 3 of a different nature)
5205	Welding as art
5206	Other welding exhibit (up to 3 of a different nature)
5207	Welding independent study for advanced skills (up to 3 of different nature)

**CLASS 55 - Llama (PROJECT 0261-0269)**

**Llama Showmanship**

1. Showmanship is required.

**Lot No.**

5501	FFA Llama Showmanship
5502	Senior 4-H Llama Showmanship
5503	Junior 4-H Llama Showmanship
5504	Novice 4-H Llama Showmanship

***General Rules and Livestock Division Rules also apply.***

1. Levels will be passed by assessment of a llama leader. Ribbon placing does not denote passing a level.
2. 4-H members will exhibit at the highest level passed.
3. Exhibitors entering this show must have a llama ILR registration number. Please contact the llama superintendent or llama leader for assistance with registering a llama for an ILR number.
4. Llamas must be groomed, fed, watered, and exercised by the exhibitor while at the county fair.
5. No instructions will be given to the contestant by any parent, leader or trainer during any ongoing classes.
6. No exhibitor may enter more than one llama per lot, except walking fiber and fleece classes.
7. Llamas are encouraged to have been in training by April 1st of the current year.
8. All llamas must have properly fitted halters and tack that are safe and comfortable for the llama. Llamas with inappropriate equipment will not be allowed to participate in the event. If the equipment is found unsafe by the llama superintendent, alternative equipment may be presented for approval by the exhibitor.
9. No exhibitor may drive between the barns. All driving must be done in designated roadways or appropriate trails.
10. ONLY the exhibitor may drive their llama at the fair.
11. Companion llamas will be allowed at the llama superintendent's discretion. Llama leaders must contact the llama superintendent prior to arrival at the fair for approval. If approved, all companion llamas must abide by all the guidelines as if they were a showing animal.
12. It is recommended that youth not show an intact male 24 months or older.
13. Males that have been used in the past year for breeding are not allowed.
14. All llamas must be 8 months or older by fair date to be exhibited.
15. Exhibitors are required to exhibit in at least one judged class besides showmanship.

**Lot No.**

5505	Performance Class
5506	Packing Class
5507	Driving Class
5508	Any other item related to project
5509	Educational Poster/ Display

**Fiber Class**

Hair or Fiber producing animals that do not fit into another lot within their class.

**Lot No.**

5510	Llama
5511	Alpaca

**INDEPENDENT STUDY (Project 2499)**

**Lot No.**

6699	Any Llama exhibit relating to your project
------	--

# FFA DEPARTMENT 1

## **Policies**

1. Entries will be judged on the basis of workmanship, evidence of sound planning, number and degree of skills involved, practicality and usefulness of entry.
2. All entries must be the student's work and result from the Vocational Education training program.
3. Judges shall give greater consideration to an item built entirely by the student rather than a prefabricated item.

## **CLASS 60 FFA FARM SHOPWORK**

### **Lot No.**

6001	Tool Repair	6013	Beginning small wood and steel construction
6002	Farm mechanics project		
6003	Beginning large wood construction	6014	Advanced small wood and steel construction
6004	Advanced large wood construction		
6005	Beginning small wood construction	6015	Leather project (new or reconditioned)
6006	Advanced small wood construction	6016	Rope halter
6007	Beginning large steel construction	6017	Acetylene weld job
6008	Advanced large steel construction	6018	Arc weld job
6009	Beginning small steel construction	6019	Electric wiring
6010	Advanced small steel construction	6020	Plumbing project
6011	Beginning large wood and steel construction	6021	Sheet and cold metal
		6022	Miscellaneous
6012	Advanced large wood and steel construction		

## **CLASS 61 FFA RANGE MANAGEMENT**

### **Lot No.**

6101	Educational display showing the three main kinds of land in Montana (farm, range, and development) and the kinds of life and activities each supports
6102	Educational display showing the four major kinds plants (grass, grass-like, forbs, and shrub) and how they differ from each other
6103	Plant collection binder
6104	Plant press, including a description of how to collect, press and mount plant materials properly.
6105	Plant collection consisting of 5 grasses, 1 grass-like, 3 forbs, and 2 shrubs
6106	Educational display describing soil properties and their effect on plant growth
6107	Educational display showing the abundance of various range plants on range in good condition, and range in poor condition

## **CLASS 62 FFA CROPS**

1. Each sheaf shall not be less than 5 ½ or more than 7" in diameter.
2. Each exhibit must be from crops grown by or assisted with by the exhibitor.

**Wheat and/or Barley Grower****Lot No.**

6201	Stage of growth display	6206	Variety Notebook
6202	Educational display	6207	Pest (insect, weed, disease) notebook
6203	Notebook	6208	Grain sample (threshed
6204	Poster		
6205	seed 1 quart jar and/or sheaf) and records		

**Any project threshed – 1 qt jar****Lot No.**

6209	Barley	6212	Variety display (5 varieties, separated)
6210	Winter Wheat		
6211	Spring Wheat		

**Any project sheaved****Lot No.**

6213	Barley	6216	Variety display (5 varieties, each in a separate sheaf)
6214	Winter wheat		
6215	Spring wheat		

**Sheaved****Lot No.**

6217	Legume	6218	Grass
------	--------	------	-------

**Threshed****Lot No.**

6219	Legume Seed	6220	Grass Seed
------	-------------	------	------------

**Harvested****Lot No.**

6221	4 pound hay sample, grass or legume	6222	1 quart silage or haylage
------	-------------------------------------	------	---------------------------

**Other****Lot No.**

6230	Other crops up to 3 (Corn, Pinto, Sugar Beets, Malt Barley, etc.)		
------	---	--	--

**CLASS 63 FFA WEED SCIENCE**

1. Mounting cards for weed plants should be light weight, white, cardboard or poster board 8½” X 11” or 16” x 11” (140-pound index card is good).
2. A three-ring binder is suggested for easy storage and display.
3. Specimens should include roots, stems, leaves and flowers where possible.

**Lot No.**

6301	Noxious weed plant display – 5 or more State noxious weeds
6302	Noxious weed educational display (growth stages, etc)



**Unit I****Lot No.**

- 6303 Mounted exhibit of 12 weeds (7 annuals, 2 biennials, and 3 perennials)  
 6304 Educational display in area of interest in Weed Project (Unit Options)

**Unit II****Lot No.**

- 6305 Mounted exhibit of 18 weeds (include at least 2 biennials and 3 perennials)

**Unit III****Lot No.**

- 6306 Mounted exhibit of 20 weeds (include at least 3 biennials and 3 perennials).  
 No duplication with Unit I or Unit II.

**Unit IV****Lot No.**

- 6307 Mounted exhibit of 8 weeds known to be dangerous or poisonous to livestock  
 6308 Educational display in area of interest in weed project or a unit requirement or option  
 6309 Other

**CLASS 64 FFA FARM SAFETY****Lot No.**

- 6401 Demonstrate knowledge of parts use and function of a variety of farm equipment.  
 6402 Demonstrate ability to operate farm equipment. (Prerequisite: Completion of Lot. 6401)

**CLASS 65 FFA HORTICULTURE****Lot No.**

- 6501 Any exhibit, up to 10 unlike items

**CLOVERBUDS DEPT. J****CLASS 70 – CLOVERBUD**

1. This class is only open to enrolled 4-H members who turn 6 – 8 during the 4-H year.
2. Participation ribbons and/or prizes will be given for these projects. Judging will be informal.
3. Up to three (3) items may be entered
4. Cloverbuds may bring items to indoor judging at the time specified in the fair schedule.
5. Cloverbuds do not compete for awards.

**Lot No.**

- 7001 – Cloverbud indoor project (up to 3 items)

## Please note:

The Carbon County 4-H Council, in cooperation with the Carbon County Fair Board, will no longer pay monetary award premiums to those 4-H members who do not turn in a complete 4-H record book. Incomplete record books will not be given credit. Late record books will not be given credit.

*Record books are due into the Extension Office on **Tuesday, Sept. 5, 2017.** No late books will be accepted.*

### Premium Points

<u>LIVESTOCK</u>	<u>BLUE</u>	<u>RED</u>	<u>WHITE</u>
Beef	16	12	8
Dairy Cow	16	12	8
Horse	16	12	8
Sheep	16	12	8
Swine	16	12	8
Dairy Goat	16	12	8
Market Goat	16	12	8
Llama/Alpaca	16	12	8
Dogs	10	8	6
Poultry	10	8	6
Rabbits	10	8	6
Fleece	10	8	6
Cats	10	8	6
Pocket Pets	10	8	6
 <u>ALL OTHER EXHIBITS</u>			
4-H – Indoor Projects	10	8	6
FFA – Indoor Projects	10	8	6